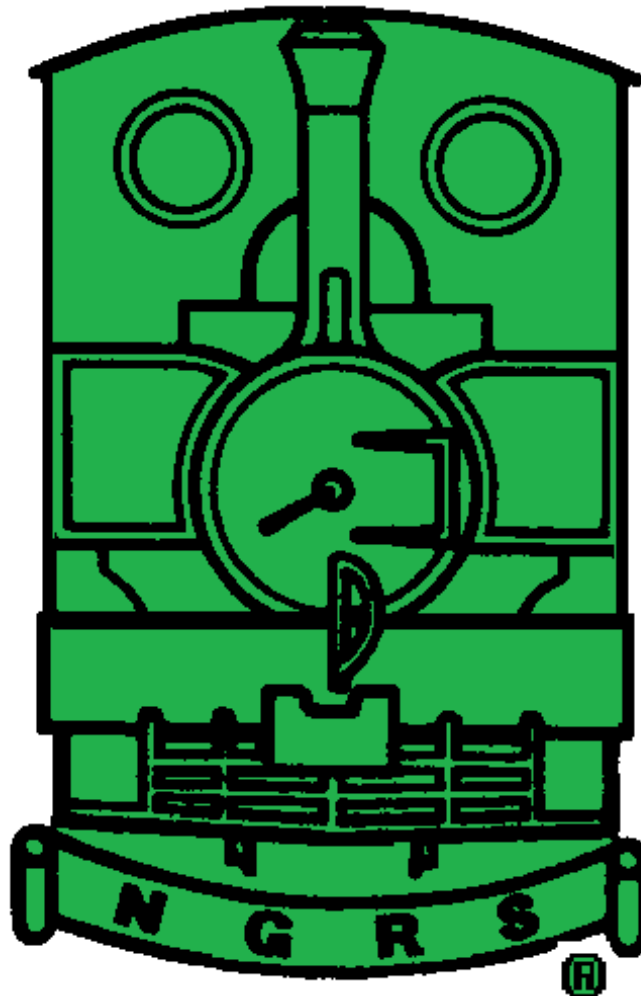


# AGM Pack



**6<sup>th</sup> ANNUAL GENERAL MEETING  
of the  
NARROW GAUGE RAILWAY SOCIETY as a Company Limited by  
Guarantee  
and the  
71<sup>st</sup> Annual General Meeting of the  
NARROW GAUGE RAILWAY SOCIETY since its formation**

**14<sup>th</sup> May 2022 at 15:00 at Statfold Narrow Gauge Trust**



**AGENDA**  
**6<sup>th</sup> AGM OF THE NARROW GAUGE RAILWAY SOCIETY**  
**as a Company Limited by Guarantee**  
**and the**  
**71<sup>st</sup> AGM of the Society since its formation**

**To be held on 14th May 2022 at 15:00 at Statfold Narrow Gauge Trust**

**Informal business and reports from Directors, Officers and other groups**

1. Apologies for absence
2. Minutes of 2021 AGM
3. Questions arising from Director's and Committee Officer's Reports
4. Questions arising from Local Area Group Secretary's Reports

**Formal business of the Narrow Gauge Railway Society as a Limited Company**

5. Acceptance of Company Accounts
6. Election of Directors

**Other informal business**

7. Committee Officers
8. Next Year's AGM
9. Any Other Business

**Copies of the reports prepared by the Directors and Officers, other groups, the Company Accounts and Director Nominations will be available in advance from the Societies Website or by request from the Secretary.**

# REPORTS FOR 6<sup>th</sup> AGM OF THE NARROW GAUGE RAILWAY SOCIETY as a Company Limited by Guarantee and the 71<sup>st</sup> AGM of the Society since its formation



**To be held on 14th May 2022 at 15:00 at Statfold Narrow Gauge Trust**

## **Apologies for absence**

*Frank Thornton, N J Hill, Lionel Kay, John Scholes, Mike Dickerson, Ken Matticks, Mike Jackson, Les Tindall, Steve Moore, Richard John Pearson*

## **Minutes of 2021 AGM**

See Appendix C.

## **Committee Reports**

### **Chairman's Report**

Hopefully, this will be the first time for three years that we have been able to hold our AGM in a normal manner, and not rely on technology to enable us to conduct our business. Let us hope that the emergence of a new normal continues without a return to pandemic conditions.

For a second year, Covid dominated our lives and it continued to affect the Society throughout 2021. We did, however run a successful series of visits during the summer and your committee was able to meet in person at the end of the year.

Our two journals continued as strongly as ever and I did not feel that fewer members' visits to fewer lines in the UK was reflected in a reduction in the content of NGN which remains, in my opinion, the premier source for news of the miniature and narrow gauges. Reverting to accessing web sites and other forms of social media is a successful way to find news when visits are not happening! Overseas news did, of course, suffer as there was virtually no leisure travel abroad. Thanks are due to all the editors for their hard work.

We published more issues of TNG than ever before – eight with over 350 pages – in 2021. This is a direct reflection of lockdowns: members have had more time on their hands for research and writing. There is still a large pile of material waiting to be published and we will gradually get through that.

Last year was challenging financially and although we did draw on our reserves; we have to remember that those reserves included cash from bequests donated to the society specifically for the benefit of all members. Extra and larger publications do precisely that.

We are still in a financially strong position, and again decided not to increase subscriptions for 2022/2023. Print and postage costs have already increased significantly this year and with inflation at every part of the economy, I anticipate increased subscriptions in 2023.

Maintaining membership numbers is our main priority and in particular attracting the younger generation. Happily, we held our own in membership terms during 2021.

The library, our great and underused resource, has also suffered from an inability to access the premises at Apedale but a return to normality means that open days are again planned this year.

We have recently gone online with a new design web site, thanks to the efforts of *Neil Limbrick*. This is clearer and crisper than its predecessor and we are now updating all the information on the site.

As always, I will end with thanks to all those who have played a part in the life of the society in the past year – directors, committee members, volunteers and contributors to both magazines.

*Alan Burgess*



## Treasurer's Report (Appendix A)

My apologies for the Draft Accounts only being available for circulation much closer to the date of the AGM than I would have wanted. The transition to Sage has continued to be less straightforward than hoped and that has led to a considerable amount of to-ing and fro-ing with our accountants to finalise the numbers.

As noted by our Chairman in his report, the committee has chosen to use some of our cash reserves to provide more and larger journals over the Covid period than subscriptions and much reduced sales of journals for the year could cover. The impact of this can be seen on the Balance Sheet, where Cash at bank and in hand has fallen from £105,312 at 31 December 2019 (documented in last year's Accounts) to £100,540 at 31 December 2020 and now to £91,608 at 31 December 2021. Note that this level of cash reserves still amounts to more than two year's expenditure.

Turning to Turnover and Costs for the year, the key underlying numbers are:

- Subscription income is around £33,000 per annum and much the same as pre-Covid (no change in subscription rates and similar number of members)
- Sales of journals (commercial and private) are around £1,200 – significantly down on pre-Covid (due to closure of specialist shops in particular)
- Payments by members for visits are also part of the turnover – around £2,400 in 2021
- Costs of our journals, including postage, are up from around £32,700 in 2019 to £35,400 in 2020 to £38,200 in 2021
- Visit Costs closely follow Payments by members and are largely donations made to the railways we visit
- Administrative costs (which include the library) run at about £4000 per year.

Put those together and with inflation now 'taking off' (unit costs from our printers having already increased considerably this year) cash reserves at the end of 2022 will again be lower and the committee will have to decide later in the year whether subscription rates need to rise next year and/or compromises made on the number and size of journals published.

The figures contained in the Detailed Income and Expenditure Account (particularly the Turnover) do not match closely with the above because of differing calculations of deferred income and, on the Cost side, there have been some changes in accruals made and cost allocations. If anyone would like to understand the detail, I am happy to go through this outside the meeting.

*Robert Watson*

## Secretary's Report

Many of you may have noticed that I have announced my intent to step down from the role of Secretary and several adverts have appeared for my replacement; suffice to say that I do not wish to let the Society down and *Alan* has persuaded me to remain in role until a replacement can be found.

This is the first time since 2019 that we have been permitted to meet at a physical location and to see you in person, however one of the upshots of the previous virtual AGM's, is that we have been requested to facilitate simultaneously having online delegates at the meeting, which means that it will be possible for overseas members to join us. I hope the technology will work successfully.

During these difficult years we have tried to reach out to the many of you who are online and over 90% of you have registered to receive NGRS emails; we are happy for you to use a friend or relative's email, so if you would like to join in please contact Jill Everitt to register. This does not mean that we will withdraw any of our printed or postal services for those that continue to use them.

Last years virtual AGM was held as a live event on the Internet and allowed members from the other side of the world to join us, so this is a trend we hope to continue by live streaming this years event.

I would like to thank those of you who are not present but have taken the effort to vote as this provides feedback as to your feelings in respect of our management of the Society.

The corporate aspects of the Society (Company Limited by Guarantee) are now well established and there have been no recent changes to statute that affect us.

In the last 12 months I have dealt with around 2,000 pieces of correspondence, fortunately many of these have been internal to the Committee and have been part of normal administration.



There have been two Committee meetings in the last 12 months, one virtual and one in person, for me the virtual meetings are great, as they can be recorded so I don't need to take minutes during the meeting. The physical meeting was held at Apedale so that the Committee could see the progress that has been made in the library.

It is clear that one effect of the recent lockdowns is that many of you have been providing material to our publications, some for the first time, and I hope that this has inspired many to continue supporting the Society.

Finally, I would like to state what a pleasure it has been to work with my fellow Directors and executive members during my tenure and I hope that my successor will have an equally fulfilling and pleasurable experience.

*Steve Barber*

### **Membership Secretary's Report**

During 2021 the Society stand at Statfold Barn Railway was our primary membership recruitment vehicle with an impressive yield of 21 new members. We are grateful to all those members who volunteered to represent the Society during these events.

We closed the year with an additional 28 members. Overall, a good result given the difficult circumstances prevalent throughout much of the year. Sadly, 15 members passed away during the membership year.

At the time of writing (mid April) there are approximately 145 members who have not made their renewal intentions clear. Working from current renewals against the corresponding period last year numbers are holding steady.

We have slightly fewer new members so far this year compared with the corresponding period last year.

I have been amazed at the kindness of those members who have made financial donations to the Society during the annual membership renewal process. Last year, donations were an impressive £1,119 and have been exceeded this year, currently standing at £1,200. On behalf of the Society many thanks for your generosity

One other item to mention and with thanks to our member *Martin Wootten*, an updated Guide to Narrow Gauge & Miniature Railways is being produced. This publication will be welcomed by those members who have missed the guide for the last couple of years since *Lawson Little's* 2019 version. *Martin* has spent many months researching the internet and other sources gathering and updating information. We are very grateful for his diligence in compiling our new Rail Guide for the use of the membership at large.

*Jill Everitt*

### **THE NARROW GAUGE Editor's Report**

2021 was a record year in terms of number of issues and pages of TNG – eight issues and 356 pages, easily beating 2020 which itself was a record year. No wonder I'm tired. The reason for this burst of activity was a surge in activity from members, no doubt locked in because of Covid restrictions.

There were three special issues in 2021 – *Allan Baker's* account of Bagnall Locomotives working for Tongaat sugar in South Africa; *Jonathan James's* survey of narrow gauge railways in London and the southeast of England; and *Brian Palmer's* account of miniature railways in Suffolk gardens.

We have sufficient funds to allow us to spend more on publications which are the main benefit of NGRS membership – some from bequests gifted to the Society to be used for the benefit of members.

Contributions have continued to flow in, and I now have three special issues waiting in a queue, plus a far higher than normal backlog of articles for standard issues. We have already distributed three issues of TNG in 2022, including one special issue, and it looks as if this year might be as busy in the last two.

I believe that the quality of material matches the quantity and, for once, I do not have to reiterate my usual plea for more UK content.

Despite that comment, we do not receive many historical articles on industrial narrow gauge in the UK. Can we persuade members to dig out pictures and notes and share them for all of us to enjoy? There must be memories of industrial lines, and also the early days of preservation: please consider writing a piece for us.

My thanks as always to members who have provided articles for The Narrow Gauge, and particularly those who sent their first texts during Covid. Do please carry on, we rely on you absolutely.

*Alan Burgess*

### **NARROW GAUGE NEWS Editors' Reports**



## **(a) Editor's Report**

Since the last AGM, six issues of Narrow Gauge News have been produced; once again I cannot thank too much my colleagues who edit sections of the publication; they are invaluable. *Alan Burgess* edits the Overseas section and *Gerry Balding* the British narrow gauge; *Jonathan James* is responsible for the Miniature Gauges section. *Graham Feldwick* continues to produce an outstanding Archaeology and History section and *Les Tindall* is developing the Modelling section. *Gerry Balding* and *Alan Burgess* proof-read each edition for me and manage to remove most of my errors.

There have been issues of 36, 56, 48, 52, 40 and 36 pages. We have been able to maintain these excellent page numbers because there has been a lot of home news and our editors have resourced material both from members' reports and other sources. Overseas news has understandably been in shorter supply because of the many restrictions on travel, though we have felt the benefit of reports from overseas members. Strangely, the modelling section, which began to show great promise, has struggled a little recently, but that may be because people are getting out and about more! Do send *Les* your modelling reports.

I expect that travel will again become possible over the next twelve months (though world affairs may limit it severely) and so our overseas section will again flourish. It is always a great pleasure to read articles about places that I have never visited and to see photos of trains I have no hope of seeing in reality and I trust that our readers feel the same. Once again, may I encourage all members to send in reports and photos, however basic, so that we can present a true picture of society activity and so that we may all get pleasure from relaxing with a good read.

The final editing of NGN still takes about a week of work. The section editors do a great deal too. I am willing to continue for a while if the membership so wish.

*Paul Bennett*

## **(b) UK and Ireland News Editor's Report**

I would like to thank everyone who has been so helpful over the past year, including all the NGN Editorial Team, and to all the NGRS members who have submitted reports and photos.

Since the gradual lifting of the pandemic restrictions, railways seem to be coming back to life and members' reports are starting to flow once again. Overall, it's been an interesting year with the return of galas and other special events. There have been a number of significant projects brought to fruition including the completion of new-build locos and good progress being made on others.

We are well served by news and reports from English and Welsh heritage railways (although there are still a few notable exceptions). A number of railways have been very helpful in supplying reports and photos on request. This has proved successful as they recognise the value of the publicity their reports and photos in Narrow Gauge News can provide. I would like to thank them for their contributions and wish them every success.

Sadly, with the closure of the Bord na Mona peat railways, the flow of industrial news has all but ceased. If any member comes across any locations or news reports on the use of narrow gauge railways in industry, I would especially welcome any reports covering this topic.

Finally, I would I please ask all members that when visiting railways or special events (or even volunteering on railways) to take the time to send me a brief report and photos for inclusion in next Narrow Gauge News describing what was seen or any interesting news or observations. It is these reports which are the lifeblood of the section.

I look forward to working again with you all over the coming year.

*Gerry Balding*

## **(c) Miniature News Editor's Report**

We continued to receive a good supply of miniature railway reports for Narrow Gauge News during the past twelve months, perhaps helped by members holidaying at home, although various lockdowns and restrictions created their own issues.

Unfortunately, it was not possible to use all of the photographs sent to me, but as many as possible were used. We also decided to produce a 2021 Miniature Railway Review, which was distributed to members with the March 2022 member pack. Feedback received so far has been positive.

It would be great to hear from members who have private lines, so that we can keep the pages of Narrow Gauge News alive. Information about the location of these railways can be restricted to protect individuals' privacy. The same goes for model engineering societies and some of the lesser known railways that we often don't hear about.

*Jonathan James*





#### **(d) Overseas Editor's Report**

2021 was, like 2020, a year best forgotten in terms of overseas news. International travel was restricted, railways were not operating, and when the Covid situation did seem to ease towards the end of the year, few had the confidence to travel.

We do, of course, rely to a large extent on reports from members for overseas news. The little that we did receive came from members living overseas, or various news sources covering the activities of lines that were either operating or concentrating on preparing for a resumption of activities.

At the moment 2022 looks like being a much better year. Foreign travel is, generally, back on the agenda and news is beginning to trickle in. Barring a return of the pandemic, I am looking forward to a much busier year.

*Alan Burgess*

#### **(e) Archaeology & History Editor's Report**

Thank you to everyone who has sent in reports of visits, historical notes and photographs of former narrow gauge and miniature railways during the past year. Clearly between us all there is a very wide range of interests, and it's been good to put together such a diverse mix for the Archaeology & History (A & H) Section of each edition of NGN. Thank you too for your subsequent comments on the items, and I trust that everyone finds this section of value.

It's an interesting thought that 100 years ago the use of narrow gauge railways was evident everywhere, from extensive systems down to the smallest tracks as part of a factory process, and that miniature railways were then still just coming into their own. Times have changed, of course, and whilst there is still so much to discover and enjoy, a large amount has been lost. And yet in many cases, a visit to a former railway location can also be a very rewarding and enjoyable experience, especially with a little prior research, or by reading, or re-reading, a book on the railway beforehand. As always, I hope that through the A & H Section we are keeping the memory of these lines alive and adding a little to their history.

Whatever you find, either 'on the ground' or through research, do please remember NGN and send me a report and, if you can, include a photograph or two. I'm also very happy to receive any queries and will try to help where I can.

Thank you too for the reports received on roadside narrow gauge wagons, often displayed as memorials to past industries and events. The booklet on these continues to progress and is in the queue to be published by the IRS. In the meantime, do please send a report in if you come across one in your travels.

*Graham Feldwick*

#### **(f) Modelling Secretary's Report**

I have received a number of reports from members who have visited exhibitions along with their photos. However more recently, perhaps due to less exhibitions, the reports have dried up, to the point that one NGN had only the exhibition calendar and product news. I have occasionally received items submitted by members with build information on their own layouts which has been very useful. I feel that along with the exhibition visit reports this would be a good direction to "enhance" the modelling section of the magazine. It is difficult to know how many members do model, but perhaps a "plea" for short articles and/or photos might produce something that will keep this section going and make it informative for readers.

*Leslie Tindall*

#### **(g) Event Diary Editor's Report**

It is pleasing to see a number of railways publicising their events again, although the number of events is still down on pre-pandemic levels, probably due to railways taking a cautious approach to their customer's willingness to attend mass participation events, and also (increasingly) concerns about the availability of coal. I am hearing that a number of railways are taking a short notice approach to timetabling this year, so just because an event isn't listed in its "traditional" date slot in Event Diary doesn't mean it won't be held. Therefore, the advice has to be that it is always worth keeping an eye on railways' websites and social media before travelling.

*Iain McCall*

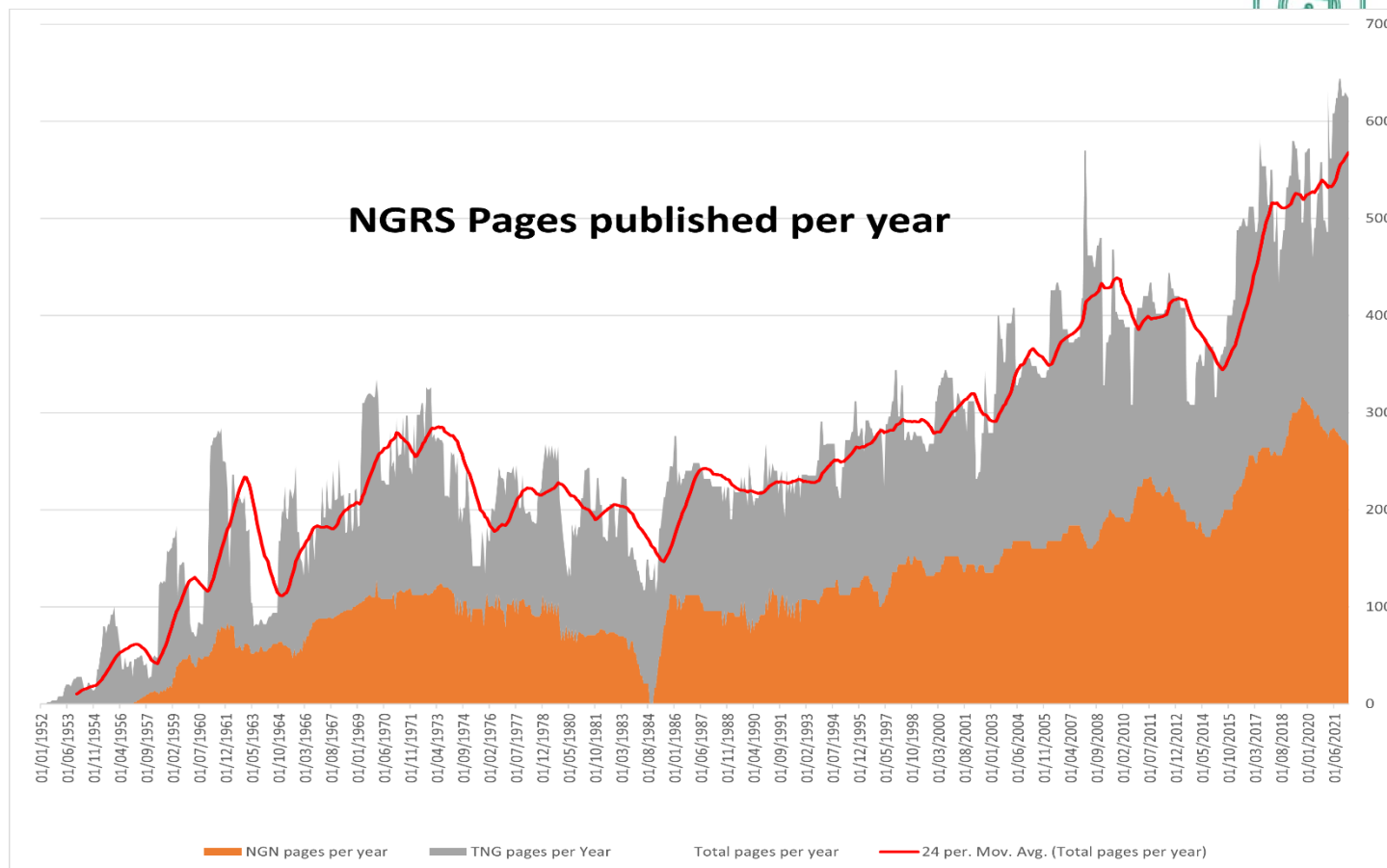
#### **Sales Officer's Report**

Report not currently available

*Dan Holbrook*

#### **Publishing Report**

Details included in the Editors Reports above



*Steve Barber*

## Legal Assistant's Report

There were no significant legal matters referred to the Legal Assistant since the last report to the membership.

Nothing further has been done on the lease of library space from Moseley Railway Trust.

*Ken Matticks*

## Librarian's Report

We had high hopes for 2021; alas Covid19 continued to interfere with our plans to realise them. Even so we were able to make considerable progress in the Library at Apedale and elsewhere.

Firstly, I must thank my colleagues Iain Logie and Martin O'Keefe, together with Stephen Teather, who have continued to accession incoming material (of which more below), deal with loans and enquiries, sort out the extensive contents of the Library and our storage facility, deal with digitalisation, and whose knowledge of both the world of the narrow gauge and the Library is astonishing. We must also thank our fellow member Kim Bailey who in 2017 digitalised our entire back catalogue of in-house publications (Narrow Gauge News and The Narrow Gauge) in a searchable .pdf format, and keeps this updated for us, a very valuable facility.

2021 was a vintage year for incoming material, with the arrival of collections from Phil Pacey specialising in the Nordic countries and France; Lawson Little – a huge collection including many of the notes and researches for NGRS publications; and those of John Oliveira, David Robinson, Ray Wilkinson, and John Townsend. We are very grateful for these and other donations which continues to build your Library as one of the best narrow gauge railway resources in the UK.

We also buy selectively new books as they appear on the market – though alas, book prices are suffering from considerable inflation -and we try to provide reviews of most of those so members know what is there.

The Moseley Railway Trust, our hosts at Apedale, continue to be great supporters and helpers to us; we are most grateful to them for their friendship and assistance. We occupy two rooms in their services building, which may be best described as "full", and also a climate managed shipping container adjacent – best described as "overfull"! We were offered a further container but before proceeding with that decided to make a very determined effort to sort out duplicates and material not relevant to the narrow gauge (it is surprising what creeps in!). That has resulted in some useful sales income from our offers to members and has released some space for us. Having some concerns over the





long term health of the collection in a container, we may also move some of the rarely accessed material to a local secure storage facility for safer storage, especially post digitalisation.

We continue to support MRT on their plans for their intended new Museum building, the foundations for which are in place, which it is intended will contain a modern and larger dedicated Library space with easier access for all. That is a way off yet, but progress continues to be made. The digitalisation project continues to make good progress though we urgently need to find an archive system to enable easy search facilities as the collection grows – we think we have found something suitable for this subject to technical and board approval, which we will be advancing shortly.

This year we will again have a few open days for members to call in and see what the Library holds, which will be advertised in NGN. We look forward to seeing you then.

*Peter Wilson*

### **Assistant Librarian's Report**

Included in librarian's Report

*Martin O'Keefe*

### **Film & Video Archivist's Report**

There is little interest in the Video Library with the last loan being made in October 2018.

No further progress with transferring the library content to external hard drives for archiving. A small number have been transferred.

With little interest by members in the library the hard drive project has not been pursued.

Currently not possible to supply an updated loans list due to computer failure & loss of data & ability to duplicate DVDs

The Librarian would like to pass the library on to a volunteer able to upgrade it - much of the upgrade suggestions being well beyond the meagre computer skills of the current librarian.

In the absence of a volunteer the Video Library should be returned to Apedale.

*Mike Jackson*

### **Webmaster's Report**

The last year has seen a significant push on developing the website to improve the experience for both members and potential members.

The first stage was to rebuild the website to use a content management system to help make it quicker and easier to update. Once this was complete I was able to concentrate on a new look and feel, including a new menu structure.

It was hard to choose a colour scheme that was not too closely aligned with the livery of any particular railway, the option to choose your own colour scheme for the website.

Once these two stages were complete, the whole committee were able to focus on checking the content and updating it where needed. We also improved the way certain elements like the sales page were better laid out and easier to use.

The next focus for the website is to add additional features by adding a secure area that only members can access. This will allow us to offer a much wider library of downloaded content and more interactive tools. An example of this is the new interactive rail guide (<https://ngrs.org/rail-guide/>) where you can filter different railways by type and location.

We will also be looking for ways to link the website in with the Facebook group and other social media platforms to reduce the workload for the committee and offer members a range of different ways to engage with the Society.

*Neil Limbrick*

### **Facebook Administrator's Report**

The NGRS Facebook group continues to grow and live a life almost of itself, with only a light touch of moderation required from time to time. Members stand at just over 3,500, and nearly 2000 of these were active in the group in the last 28 days (to 20th April). In the same period there were 120 posts on varying topics. For example, a popular recent post was *Gerry Balding's* report on a visit to Southwold Railway Trust.



There is scope for more use of the Facebook group and page to promote the society to non-members, and this is something I shall endeavour to do over the coming months. Meanwhile I am, as always, most grateful to *Simon Guppy* my co-administrator who is much quicker on the draw than me when it comes to approving posts or new members.

Facebook remains a useful tool for some, and anathema to others. In reality it's just one of many ways to access news and other content on whatever subject you are interested in.

*Chris Roberts*

### **Visit's Officer's Report**

After the disappointments of 2020, it is pleasing to report a successful visits season in 2021.

We were able to deliver 12 visits during a rather truncated visits season; we couldn't really consider arranging any visits prior to August, owing to the COVID restrictions. There was clearly a lot of pent-up demand from the membership, as over 100 bookings were made Membermojo within 24 hours of my sending out an All-Members e-mail, to announce that visits were open for bookings!

Overall, around 240 bookings were received across the season, with quite a lot of members booking for multiple visits.

The level of bookings via Membermojo has been in line with expectations (around 85-90%), with around 10-15% of participants preferring to book using the paper forms. Membermojo appears well received by those members using it, and I judge the introduction of online booking to have been very successful. Those members who book via Membermojo receive an automated receipt; they are also sent their Joining Instructions by e-mail prior to the visit. Members booking by post receive a receipt (manually, via the post), and their Joining Instructions are also sent via the post.

Financially, we made a slight loss on the year's visits. This is something which I have discussed with *Steve Moore*, and we have put the losses down to (a) charges made to us for online transactions, and (b) the cost of printing booking forms as inserts to *Narrow Gauge News*. As a result, we have agreed to slightly increase the amount which the Society retains from visit income. In general, we still aim to pass around 90% of income to the railway owner (or to a charity of their choice).

Looking ahead to this year, we already have a number of visits arranged, including a series of visits in July, to celebrate the Society's 70th Anniversary. We have quite a few new locations on this year's agenda, and I hope that these will be popular. I have also arranged one visit jointly with the Industrial Railway Society, and the door is open to continue to do so, as we have a lot of members and interests in common.

I would like to thank Jonathan James and Jill Everitt, who have stepped in to lead the visits on the occasions when I was unable to attend, and also to thank all of the Directors for their support in putting together a successful visit season in 2021.

*Simon Guppy*

### **Publicity/ Exhibition Officer's Report**

Report not currently available

*Vacant Position*

### **Director for the Membership's Report**

I have had one piece of feedback which concerned the quantity of miniature railway material published. However, as I am sure the TNG Editor will mention in his report, this reflects the balance of material submitted - members wishing to see more publications on UK narrow gauge are invited to either write them or encourage others to do so. A reduction in miniature railway material published will not lead to a corresponding increase in UK narrow gauge material published because such an increase in material is not being written and submitted by the membership.

Other than that, there it has been a quiet year, which is a good thing because it means everybody is happy...

*Iain McCall*



## **Electronic Presence sub-Committee Report**

Report not currently available

I would like to thank the following committee members for their input and contributions to this project:

- *Steve Barber*
- *Jill Everitt*
- *Dan Holbrook*
- *Neil Limbrick*
- *Iain McCall*
- *Ken Matticks*
- *Peter Wilson*

*Simon Guppy*

## **Area Group Secretary's Reports**

### **Lincolnshire Area**

*Report not currently available*

*Tim Hudson*

### **London & Southern Area**

Report not currently available

*Peter Lemmey*

### **Yorkshire Area**

Report not currently available

*David Charlesworth*



## **Formal business of the Narrow Gauge Railway Society as a Limited Company.**

### **Resolution**

To accept the financial statements for the period ended 31 December 2021 and the accountants report thereon and the directors' report.

**As separate resolutions**, to elect the following Members to act as directors of the company

Alan Burgess (Chairman, The Narrow Gauge Editor & Overseas News Editor (Narrow Gauge News))

Steve Barber (Company Secretary & Sales Officer)

Paul Bennett (Narrow Gauge News Editor)

Jill Everitt (Membership Secretary)

Simon Guppy (Visits Officer)

Chris Roberts (Facebook Administrator)

Jonathan James (Miniature News Editor (Narrow Gauge News))

Iain McCall (Director for the Membership)

### **Other Informal Business**

#### **Committee Officers**

Officers

The Committee Officers are currently: *Robert Watson* (Treasurer (*Pro Tem*)), *Peter Wilson* (Librarian), *Martin O'Keefe* (Assistant Librarian), *Mike Jackson* (Film and Video Archivist), *Gerry Balding* (NGN British and Irish Editor), *Graham Feldwick* (NGN Archaeology & History Editor), *Dan Holbrook* (Sales Officer), *Neil Limbrick* (Webmaster), *Ken Matticks* (Legal Assistant) and *Leslie Tindall* (Modelling Secretary), *Steve Moore* (Auctions Officer).

*Steve Moore* has tendered his resignation as Treasurer and the duties of Treasurer will be undertaken *Pro Tem* by Robert Watson who has kindly offered his assistance. There will obviously be a transition period and we are currently advertising for a Treasurer.

Vacancies

Currently there are Vacancies for:

- Treasurer
- Secretary
- Visit Officer North
- Publicity / Exhibitions Officer(s)
- Assistants for the Library and to reduce the administrative workload on the Committee

#### **Next Year's AGM**

Next year's AGM will be held on 13th May 2023, we are hoping that Vale of Rheidol Railway's new facilities will be available to host us

There will be a 70<sup>th</sup> Birthday Weekend in East Anglia on 8<sup>th</sup> -10<sup>th</sup> July 2022 in lieu of the 2020 and 2021 AGM weekends. Further details in May NGN

### **Any other Business.**

#### **Member Voting form Comments**

Other than Apologies no Comments were received

# Appendix A 2020 Accounts



## **NARROW GAUGE RAILWAY SOCIETY DIRECTORS' REPORT AND UNAUDITED FINANCIAL STATEMENTS FOR THE YEAR ENDED 31 DECEMBER 2021**



Nigel Ricks & Company Ltd

Chartered Accountants

42 Glebe Street Loughborough Leicestershire LE11 1JR

**Narrow Gauge Railway Society  
Directors' Report and Unaudited Financial Statements  
For The Year Ended 31 December 2021**

---

**Contents**

	<b>Page</b>
Company Information	1
Directors' Report	2
Accountant's Report	3
Income and Expenditure Account	4
Balance Sheet	5
Notes to the Financial Statements	6—9
The following pages do not form part of the statutory accounts:	
Detailed Income and Expenditure Account	10



**Narrow Gauge Railway Society  
Company Information  
For The Year Ended 31 December 2021**

---

**Directors**

Mr Stephen Barber

Mr Paul Bennett

Mr Alan Burgess

Mr Jonathan James

Mr Christopher Roberts

Mr Robert Watson Mr Michael Morgan Mrs Jill Everitt

Mr Simon Guppy

Mr Iain McCall **Secretary**

Mr Stephen Barber

**Company Number**

09925208

**Registered Office**

246 Hillbury Road

Warlingham Surrey

CR6 9TP

**Accountants**

Nigel Ricks & Company Ltd

Chartered Accountants

42 Glebe Street Loughborough Leicestershire LE11 1JR

**Narrow Gauge Railway Society**  
**Company No. 09925208**  
**Directors' Report For The Year Ended 31 December 2021**

---

The directors present their report and the financial statements for the year ended 31 December 2021.

**Statement of Directors' Responsibilities**

The directors are responsible for preparing the Directors' Report and the financial statements in accordance with applicable law and regulations.

Company law requires the directors to prepare financial statements for each financial year. Under that law the directors have elected to prepare the financial statements in accordance with United Kingdom Generally Accepted Accounting Practice (United Kingdom Accounting Standards and applicable law). Under company law the directors must not approve the financial statements unless they are satisfied that they give a true and fair view of the state of affairs of the company and of the profit or loss of the company for that period. In preparing the financial statements the directors are required to:

select suitable accounting policies and then apply them consistently;  
make judgments and accounting estimates that are reasonable and prudent;  
prepare the financial statements on the going concern basis unless it is inappropriate to presume that the company will continue in business.

The directors are responsible for keeping adequate accounting records that are sufficient to show and explain the company's transactions and disclose with reasonable accuracy at any time the financial position of the company and enable them to ensure that the financial statements comply with the Companies Act 2006. They are also responsible for safeguarding the assets of the company and hence for taking reasonable steps for the prevention and detection of fraud and other irregularities.

**Directors**

The directors who held office during the year were as follows:

Mr Stephen Barber

Mr Paul Bennett

Mr Alan Burgess

Mr Jonathan James

Mr Christopher Roberts

Mr Robert Watson

Mr Michael Morgan

Mrs Jill Everitt

Mr Simon Guppy

Mr Iain McCall

RESIGNED 08/05/2021

RESIGNED 08/05/2021

**Small Company Rules**

This report has been prepared in accordance with the special provisions relating to companies subject to the small companies regime within Part 15 of the Companies Act 2006.

By order of the board

-----

Date

**Narrow Gauge Railway Society  
Accountant's Report  
For The Year Ended 31 December 2021**

---

**Chartered Accountant's report to the directors on the preparation of the unaudited statutory accounts of Narrow Gauge Railway Society For The Year Ended 31 December 2021**

In order to assist you to fulfil your duties under the Companies Act 2006, I have prepared for your approval the accounts of Narrow Gauge Railway Society For The Year Ended 31 December 2021 which comprise the Income and Expenditure Account, the Balance Sheet and the related notes from the company's accounting records and from information and explanations you have given to us.

As a practising member of the Institute of Chartered Accountants in England and Wales (ICAEW), we are subject to its ethical and other professional requirements which are detailed at <http://www.icaew.com/en/membership/regulations-standards-and-guidance>.

This report is made solely to the directors of Narrow Gauge Railway Society, as a body, in accordance with the terms of our engagement letter. Our work has been undertaken solely to prepare for your approval the accounts of Narrow Gauge Railway Society and state those matters that we have agreed to state to the directors of Narrow Gauge Railway Society, as a body, in this report in accordance with ICAEW Technical Release 07/16 AAF. To the fullest extent permitted by law, we do not accept or assume responsibility to anyone other than Narrow Gauge Railway Society and its directors, as a body, for our work or for this report.

It is your duty to ensure that Narrow Gauge Railway Society has kept adequate accounting records and to prepare statutory accounts that give a true and fair view of the assets, liabilities, financial position and profit or loss of Narrow Gauge Railway Society. You consider that Narrow Gauge Railway Society is exempt from the statutory audit requirement for the year.

We have not been instructed to carry out an audit of the accounts of Narrow Gauge Railway Society. For this reason, we have not verified the accuracy or completeness of the accounting records or information and explanations you have given to us and we do not, therefore, express any opinion on the financial statements.

Signed

-----

Date

Nigel Ricks & Company Ltd  
Chartered Accountants  
42 Glebe Street  
Loughborough  
Leicestershire  
LE11 1JR

**Narrow Gauge Railway Society  
Income and Expenditure Account  
For The Year Ended 31 December 2021**

---

<b>2021</b>			<b>2020</b>
	<b>Notes</b>	<b>£</b>	<b>£</b>
<b>TURNOVER</b>		30,685	43,579
Cost of sales		(43,002)	(37,843)
		<hr/>	<hr/>
<b>GROSS (DEFICIT)/SURPLUS</b>		(12,317)	5,736
Administrative expenses		(4,159)	(4,313)
		<hr/>	<hr/>
<b>OPERATING (DEFICIT)/SURPLUS</b>		(16,476)	1,423
Other interest receivable and similar income		425	635
		<hr/>	<hr/>
<b>(DEFICIT)/SURPLUS BEFORE TAXATION</b>		(16,051)	2,058
Tax on (Deficit)/surplus		533	(376)
		<hr/>	<hr/>
<b>(DEFICIT)/SURPLUS AFTER TAXATION BEING (DEFICIT)/SURPLUS FOR THE FINANCIAL YEAR</b>		<hr/> (15,518) <hr/>	<hr/> 1,682 <hr/>

The notes on pages 6 to 9 form part of these financial statements.

**Narrow Gauge Railway Society  
Balance Sheet  
As at 31 December 2021**

	2021			2020	
	Notes	£	£	£	£
<b>FIXED ASSETS</b>					
Intangible Assets	3		250		250
Tangible Assets	4		30,662		30,600
			<u>30,912</u>		<u>30,850</u>
<b>CURRENT ASSETS</b>					
Stocks	5	1,391		1,391	
Debtors	6	7,285		5,490	
Cash at bank and in hand		91,608		100,540	
		<u>100,284</u>		<u>107,421</u>	
<b>Creditors: Amounts Falling Due Within One Year</b>	7	<u>(15,362)</u>		<u>(6,919)</u>	
<b>NET CURRENT ASSETS (LIABILITIES)</b>			<u>84,922</u>		<u>100,502</u>
<b>TOTAL ASSETS LESS CURRENT LIABILITIES</b>			<u>115,834</u>		<u>131,352</u>
<b>NET ASSETS</b>			<u>115,834</u>		<u>131,352</u>
Income and Expenditure Account			<u>115,834</u>		<u>131,352</u>
<b>MEMBERS' FUNDS</b>			<u>115,834</u>		<u>131,352</u>

For the year ending 31 December 2021 the company was entitled to exemption from audit under section 477 of the Companies Act 2006 relating to small companies.

The members have not required the company to obtain an audit in accordance with section 476 of the Companies Act 2006. The directors acknowledge their responsibilities for complying with the requirements of the Act with respect to accounting records and the preparation of accounts.

These accounts have been prepared in accordance with the provisions applicable to companies subject to the small companies' regime.

On behalf of the board

-----

Date

The notes on pages 6 to 9 form part of these financial statements.

# **Narrow Gauge Railway Society**

## **Notes to the Financial Statements**

### **For The Year Ended 31 December 2021**

---

#### **1. Accounting Policies**

##### **1.1. Basis of Preparation of Financial Statements**

The financial statements are prepared under the historical cost convention and in accordance with the FRS 102 Section 1A Small Entities - The Financial Reporting Standard applicable in the UK and Republic of Ireland and the Companies Act 2006.

##### **1.2. Turnover**

Turnover is measured at the fair value of the consideration received or receivable, net of discounts and value added taxes. Turnover includes revenue earned from the sale of goods and from the rendering of services. Turnover is reduced for estimated customer returns, rebates and other similar allowances.

##### **Sale of goods**

Turnover from the sale of goods is recognised when the significant risks and rewards of ownership of the goods has transferred to the buyer. This is usually at the point that the customer has signed for the delivery of the goods.

##### **Rendering of services**

Turnover from the rendering of services is recognised by reference to the stage of completion of the contract. The stage of completion of a contract is measured by comparing the costs incurred for work performed to date to the total estimated contract costs. Turnover is only recognised to the extent of recoverable expenses when the outcome of a contract cannot be estimated reliably.

##### **1.3. Intangible Fixed Assets and Amortisation - Other Intangible**

Other intangible assets are .... It is amortised to income and expenditure account over its estimated economic life of .... years.

##### **1.4. Tangible Fixed Assets and Depreciation**

Tangible fixed assets are measured at cost less accumulated depreciation and any accumulated impairment losses. Depreciation is provided at rates calculated to write off the cost of the fixed assets, less their estimated residual value, over their expected useful lives on the following bases:

Freehold	25% Straight Line
Leasehold	%
Fixtures & Fittings	33% Straight Line

##### **1.5. Stocks and Work in Progress**

Stocks and work in progress are valued at the lower of cost and net realisable value after making due allowance for obsolete and slow-moving stocks. Cost includes all direct costs and an appropriate proportion of fixed and variable overheads. Work-in-progress is reflected in the accounts on a contract by contract basis by recording turnover and related costs as contract activity progresses.



**Narrow Gauge Railway Society**  
**Notes to the Financial Statements (continued)**  
**For The Year Ended 31 December 2021**

---

**1.6. Taxation**

Income tax expense represents the sum of the tax currently payable and deferred tax.

The tax currently payable is based on taxable profit for the year. Taxable profit differs from profit as reported in the statement of comprehensive income because of items of income or expense that are taxable or deductible in other year and items that are never taxable or deductible. The company's liability for current tax is calculated using tax rates that have been enacted or substantively enacted by the end of the reporting period.

Deferred tax is recognised on timing differences between the carrying amounts of assets and liabilities in the financial statements and the corresponding tax bases used in the computation of taxable profit. Deferred tax liabilities are generally recognised for all taxable timing differences. Deferred tax assets are generally recognised for all deductible temporary differences to the extent that it is probable that taxable profits will be available against which those deductible timing differences can be utilised. The carrying amount of deferred tax assets is reviewed at the end of each reporting period and reduced to the extent that it is no longer probable that sufficient taxable profits will be available to allow all or part of the asset to be recovered.

Deferred tax assets and liabilities are measured at the tax rates that are expected to apply in the period in which the liability is settled or the asset realised, based on tax rates (and tax laws) that have been enacted or substantively enacted by the end of the reporting period. Deferred tax liabilities are presented within provisions for liabilities and deferred tax assets within debtors. The measurement of deferred tax liabilities and asset reflects the tax consequences that would follow from the manner in which the Company expects, at the end of the reporting period, to recover or settle the carrying amount of its assets and liabilities.

Current or deferred tax for the year is recognised in profit or loss, except when they related to items that are recognised in other comprehensive income or directly in equity, in which case, the current and deferred tax is also recognised in other comprehensive income or directly in equity respectively.

**2. Average Number of Employees**

Average number of employees, including directors, during the year was as follows:

	<b>2021</b>	<b>2020</b>
Office and administration	9	10
	<u>9</u>	<u>10</u>

**3. Intangible Assets**

	<b>Other £</b>
<b>Cost</b>	
As at 1 January 2021	250
As at 31 December 2021	<u>250</u>
<b>Net Book Value</b>	
As at 31 December 2021	<u>250</u>
As at 1 January 2021	<u>250</u>

**Narrow Gauge Railway Society**  
**Notes to the Financial Statements (continued)**  
**For The Year Ended 31 December 2021**

**4. Tangible Assets**

	<b>Land &amp; Property</b>			
	<b>Freehold Fittings</b>	<b>Leasehold</b>	<b>Fixtures &amp;</b>	<b>Total</b>
	<b>£</b>	<b>£</b>	<b>£</b>	<b>£</b>
<b>Cost</b>				
As at 1 January 2021	30,302	617	1,440	32,359
Additions	-	-	314	314
As at 31 December 2021	30,302	617	1,754	32,673
<b>Depreciation</b>				
As at 1 January 2021	-	617	1,142	1,759
Provided during the period	-	-	252	252
As at 31 December 2021	-	617	1,394	2,011
<b>Net Book Value</b>				
As at 31 December 2021	30,302	-	360	30,662
As at 1 January 2021	30,302	-	298	30,600

**5. Stocks**

	<b>2021</b>	<b>2020</b>
	<b>£</b>	<b>£</b>
Stock - materials and work in progress	1,391	1,391
	1,391	1,391

**6. Debtors**

	<b>2021</b>	<b>2020</b>
	<b>£</b>	<b>£</b>
<b>Due within one year</b>		
Trade debtors	1,384	-
Prepayments and accrued income	1,217	1,339
Corporation tax recoverable assets	533	-
	3,134	1,339
<b>Due after more than one year</b>		
Other debtors	4,151	4,151
	4,151	4,151
	7,285	5,490

**Narrow Gauge Railway Society**  
**Notes to the Financial Statements (continued)**  
**For The Year Ended 31 December 2021**

---

**7. Creditors: Amounts Falling Due Within One Year**

	<b>2021</b>	<b>2020</b>
	<b>£</b>	<b>£</b>
Trade creditors	2,602	1,506
Corporation tax	-	218
Accruals and deferred income	12,760	5,195
	<u>15,362</u>	<u>6,919</u>

**8. General Information**

Narrow Gauge Railway Society is a private company, limited by shares, incorporated in England & Wales, registered number 09925208. The registered office is 246 Hillbury Road, Warlingham, Surrey, CR6 9TP.

**Narrow Gauge Railway Society Detailed  
Income and Expenditure Account For The  
Year Ended 31 December 2021**

	2021		2020
	£	£	£
<b>TURNOVER</b>			
Sales		30,685	43,579
<b>COST OF SALES</b>			
Opening stock and work in progress	-		(1,391)
Magazine Costs	27,159		25,001
Auction Costs	-		82
Visit Costs	2,710		6,126
Binders and Other Costs	460		895
Cost of magazine delivery	8,497		-
Packaging costs	5,567		7,130
Closing stock and work in progress	(1,391)		-
		(43,002)	(37,843)
<b>GROSS (DEFICIT)/SURPLUS</b>		(12,317)	5,736
<b>Administrative Expenses</b>			
Travel expenses	-		423
Insurance	1,535		471
Advertising and marketing costs	442		399
Accountancy fees	271		870
Professional fees	13		26
Library Costs	1,072		1,447
Bank charges	574		427
Depreciation	252		250
		(4,159)	(4,313)
<b>OPERATING (DEFICIT)/SURPLUS</b>		(16,476)	1,423
<b>Other interest receivable and similar income</b>			
Other interest receivable	425		635
		425	635
<b>(DEFICIT)/SURPLUS BEFORE TAXATION</b>		(16,051)	2,058
<b>Tax on (Deficit)/surplus</b>			
Corporation tax charge	(533)		376
		533	(376)
<b>(DEFICIT)/SURPLUS AFTER TAXATION BEING (DEFICIT)/SURPLUS FOR THE FINANCIAL YEAR</b>		(15,518)	1,682

**NARROW GAUGE RAILWAY SOCIETY UNAUDITED  
FINANCIAL STATEMENTS  
FOR THE YEAR ENDED 31 DECEMBER 2021**

Nigel Ricks & Company Ltd

Chartered Accountants

42 Glebe Street Loughborough Leicestershire LE11 1JR

**Narrow Gauge Railway Society  
Unaudited Financial Statements  
For The Year Ended 31 December 2021**

---

**Contents**

	<b>Page</b>
Balance Sheet	1—2
Notes to the Financial Statements	3—6



**Narrow Gauge Railway Society**  
**Balance Sheet**  
**As at 31 December 2021**

**Registered number:** 09925208

	<b>2021</b>			<b>2020</b>	
	<b>Notes</b>	<b>£</b>	<b>£</b>	<b>£</b>	<b>£</b>
<b>FIXED ASSETS</b>					
Intangible Assets	<b>3</b>		250		250
Tangible Assets	<b>4</b>		30,662		30,600
			30,912		30,850
<b>CURRENT ASSETS</b>					
Stocks	<b>5</b>	1,391		1,391	
Debtors	<b>6</b>	7,285		5,490	
Cash at bank and in hand		91,608		100,540	
100,284				107,421	
<b>Creditors: Amounts Falling Due Within</b>					
<b>One Year</b>	<b>7</b>	(15,362)		(6,919)	
<b>NET CURRENT ASSETS (LIABILITIES)</b>			84,922		100,502
<b>TOTAL ASSETS LESS CURRENT LIABILITIES</b>			115,834		131,352
<b>NET ASSETS</b>			115,834		131,352
Income and Expenditure Account			115,834		131,352
<b>MEMBERS' FUNDS</b>			115,834		131,352

**Narrow Gauge Railway Society  
Balance Sheet (continued) As  
at 31 December 2021**

---

For the year ending 31 December 2021 the company was entitled to exemption from audit under section 477 of the Companies Act 2006 relating to small companies.

The members have not required the company to obtain an audit in accordance with section 476 of the Companies Act 2006. The directors acknowledge their responsibilities for complying with the requirements of the Act with respect to accounting records and the preparation of accounts.

These accounts have been prepared and delivered in accordance with the provisions applicable to companies subject to the small companies' regime.

The company has taken advantage of section 444(1) of the Companies Act 2006 and opted not to deliver to the registrar a copy of the company's Income and Expenditure Account.

On behalf of the board

-----

Date

The notes on pages 3 to 6 form part of these financial statements.

# **Narrow Gauge Railway Society**

## **Notes to the Financial Statements**

### **For The Year Ended 31 December 2021**

---

#### **1. Accounting Policies**

##### **1.1. Basis of Preparation of Financial Statements**

The financial statements are prepared under the historical cost convention and in accordance with the FRS 102 Section 1A Small Entities - The Financial Reporting Standard applicable in the UK and Republic of Ireland and the Companies Act 2006.

##### **1.2. Turnover**

Turnover is measured at the fair value of the consideration received or receivable, net of discounts and value added taxes. Turnover includes revenue earned from the sale of goods and from the rendering of services. Turnover is reduced for estimated customer returns, rebates and other similar allowances.

##### **Sale of goods**

Turnover from the sale of goods is recognised when the significant risks and rewards of ownership of the goods has transferred to the buyer. This is usually at the point that the customer has signed for the delivery of the goods.

##### **Rendering of services**

Turnover from the rendering of services is recognised by reference to the stage of completion of the contract. The stage of completion of a contract is measured by comparing the costs incurred for work performed to date to the total estimated contract costs. Turnover is only recognised to the extent of recoverable expenses when the outcome of a contract cannot be estimated reliably.

##### **1.3. Intangible Fixed Assets and Amortisation - Other Intangible**

Other intangible assets are .... It is amortised to income and expenditure account over its estimated economic life of .... years.

##### **1.4. Tangible Fixed Assets and Depreciation**

Tangible fixed assets are measured at cost less accumulated depreciation and any accumulated impairment losses. Depreciation is provided at rates calculated to write off the cost of the fixed assets, less their estimated residual value, over their expected useful lives on the following bases:

Freehold	25% Straight Line
Leasehold	%
Fixtures & Fittings	33% Straight Line

##### **1.5. Stocks and Work in Progress**

Stocks and work in progress are valued at the lower of cost and net realisable value after making due allowance for obsolete and slow-moving stocks. Cost includes all direct costs and an appropriate proportion of fixed and variable overheads. Work-in-progress is reflected in the accounts on a contract by contract basis by recording turnover and related costs as contract activity progresses.

**Narrow Gauge Railway Society**  
**Notes to the Financial Statements (continued)**  
**For The Year Ended 31 December 2021**

---

**1.6. Taxation**

Income tax expense represents the sum of the tax currently payable and deferred tax.

The tax currently payable is based on taxable profit for the year. Taxable profit differs from profit as reported in the statement of comprehensive income because of items of income or expense that are taxable or deductible in other year and items that are never taxable or deductible. The company's liability for current tax is calculated using tax rates that have been enacted or substantively enacted by the end of the reporting period.

Deferred tax is recognised on timing differences between the carrying amounts of assets and liabilities in the financial statements and the corresponding tax bases used in the computation of taxable profit. Deferred tax liabilities are generally recognised for all taxable timing differences. Deferred tax assets are generally recognised for all deductible temporary differences to the extent that it is probable that taxable profits will be available against which those deductible timing differences can be utilised. The carrying amount of deferred tax assets is reviewed at the end of each reporting period and reduced to the extent that it is no longer probable that sufficient taxable profits will be available to allow all or part of the asset to be recovered.

Deferred tax assets and liabilities are measured at the tax rates that are expected to apply in the period in which the liability is settled or the asset realised, based on tax rates (and tax laws) that have been enacted or substantively enacted by the end of the reporting period. Deferred tax liabilities are presented within provisions for liabilities and deferred tax assets within debtors. The measurement of deferred tax liabilities and asset reflects the tax consequences that would follow from the manner in which the Company expects, at the end of the reporting period, to recover or settle the carrying amount of its assets and liabilities.

Current or deferred tax for the year is recognised in profit or loss, except when they related to items that are recognised in other comprehensive income or directly in equity, in which case, the current and deferred tax is also recognised in other comprehensive income or directly in equity respectively.

**2. Average Number of Employees**

Average number of employees, including directors, during the year was as follows:

	<b>2021</b>	<b>2020</b>
Office and administration	9	10
	<u>9</u>	<u>10</u>

**3. Intangible Assets**

	<b>Other £</b>
<b>Cost</b>	
As at 1 January 2021	250
As at 31 December 2021	<u>250</u>
<b>Net Book Value</b>	
As at 31 December 2021	<u>250</u>
As at 1 January 2021	<u>250</u>

**Narrow Gauge Railway Society**  
**Notes to the Financial Statements (continued)**  
**For The Year Ended 31 December 2021**

**4. Tangible Assets**

	<b>Land &amp; Property</b>			
	<b>Freehold Fittings</b>	<b>Leasehold</b>	<b>Fixtures &amp;</b>	<b>Total</b>
	<b>£</b>	<b>£</b>	<b>£</b>	<b>£</b>
<b>Cost</b>				
As at 1 January 2021	30,302	617	1,440	32,359
Additions	-	-	314	314
As at 31 December 2021	30,302	617	1,754	32,673
<b>Depreciation</b>				
As at 1 January 2021	-	617	1,142	1,759
Provided during the period	-	-	252	252
As at 31 December 2021	-	617	1,394	2,011
<b>Net Book Value</b>				
As at 31 December 2021	30,302	-	360	30,662
As at 1 January 2021	30,302	-	298	30,600

**5. Stocks**

	<b>2021</b>	<b>2020</b>
	<b>£</b>	<b>£</b>
Stock - materials and work in progress	1,391	1,391
	1,391	1,391

**6. Debtors**

	<b>2021</b>	<b>2020</b>
	<b>£</b>	<b>£</b>
<b>Due within one year</b>		
Trade debtors	1,384	-
Prepayments and accrued income	1,217	1,339
Corporation tax recoverable assets	533	-
	3,134	1,339
<b>Due after more than one year</b>		
Other debtors	4,151	4,151
	4,151	4,151
	7,285	5,490

**Narrow Gauge Railway Society**  
**Notes to the Financial Statements (continued)**  
**For The Year Ended 31 December 2021**

---

**7. Creditors: Amounts Falling Due Within One Year**

	<b>2021</b>	<b>2020</b>
	<b>£</b>	<b>£</b>
Trade creditors	2,602	1,506
Corporation tax	-	218
Accruals and deferred income	12,760	5,195
	<u>15,362</u>	<u>6,919</u>

**8. General Information**

Narrow Gauge Railway Society is a private company, limited by shares, incorporated in England & Wales, registered number 09925208. The registered office is 246 Hillbury Road, Warlingham, Surrey, CR6 9TP.

## Appendix B

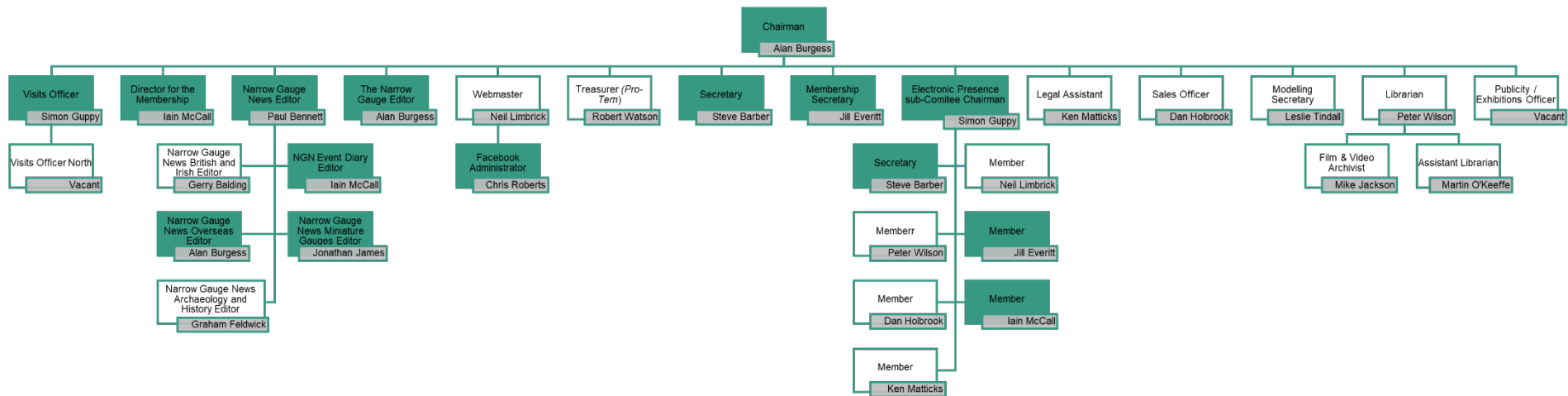
### Directors, Committee Members & Vacancies 2022



# Narrow Gauge Railway Society

## Directors and Company Officers (14/05/2022) Proposed

subject to AGM election



Solid Shading indicates NGRS Company Director

# NGRS DIRECTOR and COMPANY OFFICER CONTACT LIST – 14/05/2022 (Subject to AGM approval)



Chairman	Alan Burgess	Director	6 The Crescent, Orton Longueville, Peterborough. PE2 7DT	01733 390227	<a href="mailto:alanburgess390@outlook.com">alanburgess390@outlook.com</a>
Secretary	Steve Barber	Director	"Hillbury Cottage", 246 Hillbury Road, Warlingham, Surrey. CR6 9TP	07941 712419	<a href="mailto:secretary@ngrs.org">secretary@ngrs.org</a>
Treasurer ( <i>Pro Tem</i> )	Robert Watson		24 Hillcrest Drive, Loughborough, Leicester. LE11 2GX	07780 661215	<a href="mailto:treasurer@ngrs.org">treasurer@ngrs.org</a>
Membership Secretary	Jill Everitt	Director	4 Barnside Way, Moulton, Cheshire, CW9 8PT	07791 847037	<a href="mailto:membership@ngrs.org">membership@ngrs.org</a>
Librarian	Peter Wilson		Homestead, Ramsgate Street, Edgefield, Melton Constable, Norfolk, NR24 2AY	07899 985629	<a href="mailto:library@ngrs.org">library@ngrs.org</a>
Assistant Librarian	Martin O'Keeffe		10 Meadowcroft, Whitchurch, Shropshire SY13 1BD	07973 299438	<a href="mailto:hecla777@hotmail.com">hecla777@hotmail.com</a>
Film & Video Archivist	Mike Jackson		6 Coastguard Cottages, Upper Road, Dover. CT16 1HS	01304 208239	<a href="mailto:mikejackson6@btinternet.com">mikejackson6@btinternet.com</a>
TNG Editor	Alan Burgess	Director	6 The Crescent, Orton Longueville, Peterborough. PE2 7DT	01733 390227	<a href="mailto:alanburgess390@outlook.com">alanburgess390@outlook.com</a>
NGN Editor	Paul Bennett	Director	90 Stortford Hall Park, Bishop's Stortford CM23 5AN	01279 831565	<a href="mailto:publications@ngrs.org">publications@ngrs.org</a>
NGN British and Irish Editor	Gerry Balding		75 Vane Close, Thorpe St Andrew, Norwich, Norfolk NR7 0US	07855 109043	<a href="mailto:gerry.balding@btinternet.com">gerry.balding@btinternet.com</a>
NGN Miniature Gauges Editor	Jonathan James	Director	31, Beacon Road, Chatham, Kent. ME5 7BW	07913 900570	<a href="mailto:min.rail.editor@ngrs.org">min.rail.editor@ngrs.org</a>
NGN Archaeology and History Editor	Graham Feldwick		22A Ropers Lane, Wareham, Dorset BH20 4QT	01929 552973	<a href="mailto:feldwick@globalnet.co.uk">feldwick@globalnet.co.uk</a>
NGN Overseas Editor	Alan Burgess	Director	6 The Crescent, Orton Longueville, Peterborough. PE2 7DT	01733 390227	<a href="mailto:alanburgess390@outlook.com">alanburgess390@outlook.com</a>
NGN Event Diary Editor	Iain McCall	Director	3 Broadleaze, Upper Seagry, Chippenham, Wiltshire SN15 5EY	07770 748615	<a href="mailto:iain@mainlineandmaritime.co.uk">iain@mainlineandmaritime.co.uk</a>
Sales Officer	Dan Holbrook		64 Stonycroft, Washington, Tyne and Wear NE37 1UN	07983 856 345	<a href="mailto:sales@ngrs.org">sales@ngrs.org</a>
Webmaster	Neil Limbrick		14 Connaught Avenue, Kidderminster, Worcestershire DY11 6LS	07811 355 700	<a href="mailto:webmaster@ngrs.org">webmaster@ngrs.org</a>
Facebook Administrator	Chris Roberts	Director	296 Torrisholme Road, Lancaster, LA1 2TU	01524 39916	<a href="mailto:chrisroberts7@gmail.com">chrisroberts7@gmail.com</a>
Visits Officer	Simon Guppy	Director	16 Mascot Road, Windmill Hill, Bristol BS3 4PP	07718 384936	<a href="mailto:simon@jomat-management-services.co.uk">simon@jomat-management-services.co.uk</a>
Visits Officer North	Vacant				
Legal Assistant	Ken Matticks		3413 Fountain Way, Granbury Texas USA 76049	+01 4324 134160	<a href="mailto:matticks@airmail.net">matticks@airmail.net</a>
Modelling Secretary	Leslie Tindall		47 Cliff Court, Currie Road, Sandown, Isle of Wight, PO36 8NU		<a href="mailto:leslie.w.tindall@gmail.com">leslie.w.tindall@gmail.com</a>
Publicity / Exhibitions Officer	Vacant				
Director for the Membership	Iain McCall	Director	3 Broadleaze, Upper Seagry, Chippenham, Wiltshire SN15 5EY	07770 748615	<a href="mailto:iain@mainlineandmaritime.co.uk">iain@mainlineandmaritime.co.uk</a>





# Society Officer Vacancies

The NGRS has a number of vacancies for people willing to help with the running of the Society. The duties are not greatly time-consuming and enthusiasm is more important than experience – help will always be available as you get to grips with the detail. Attending two committee meetings a year, one on the day of the AGM in May and the other in October are expected. Please contact Secretary: Steve Barber (246 Hillbury Road, Warlingham, Surrey, CR6 9TP) or send an email to: [secretary@ngrs.org](mailto:secretary@ngrs.org) or Alan Burgess ([alanburgess390@outlook.com](mailto:alanburgess390@outlook.com))

## Secretary

Steve Barber has decided to retire as the NGRS Company Secretary, so we need a volunteer to take over his duties. – if you are interested, please contact either Steve Barber or Alan Burgess) for a full job description.

Whoever takes over will have the full support of Steve and other Directors and committee members during the handover period.

The role of the Company Secretary is wide ranging and he or she is required to be a Director and Society member. The role of the Company Secretary covers how the Society should be directed, managed, and controlled. This is also known as corporate governance, and it includes ensuring that the company complies with legal and regulatory requirements.

## Treasurer

The Treasurer is responsible for supervising all aspects of society finances, bank accounts and electronic payments and the preparation of estimates and budgets as well as paying the Society's creditors. He or she will also work with our accountants to prepare an annual financial report. A background in accountancy or bookkeeping and a knowledge of the Sage software would all be preferred but are not essential.

## Visit Officer North

Members' visits to lines otherwise difficult-to-access have become very popular, and we would like to have on board a volunteer to develop this activity in the northern half of the UK. Duties would involve identifying potential lines, negotiating access, and organising the visits themselves.

## Publicity Officer(s)

1. We would like to recruit a Publicity Officer to progress the Society's image and presence. We have no fixed plan for this task, although attracting new members is the key objective and a knowledge of social media and PR would be important. Some liaison with the general railway press could also be required, as will an ability to write persuasively.

2. The NGRS library is a world-class resource and we need to find ways to exploit it both commercially and as a tool for recruitment. We have a huge collection of images and information which many publications and authors might pay to use and, initially, we need a plan to promote this.

The Society would also be happy for members to act as Publicity Assistants, perhaps liaising with their local Heritage Railway(s).

## Library assistants

If you can help in cataloguing our library, particularly photographic images and drawings, please do not hesitate to contact the Librarian or Secretary for further information. It is possible for this to be done at home.

## Exhibition Officer (s)

Our exhibition presence recently has been limited to events at Statfold, where we have enjoyed excellent recruitment results. There are venues in other parts of the country where we could raise awareness, and the exhibition officer would identify them, organise our presence, and man the stand (hopefully with the help of local members). Display material exists for exhibition stands. There is no reason why this cannot be handled by members on a regional basis.



## General

The Directors are always pleased to be offered assistance with administering the Society. It should be noted that several of the Directors and Society Officers are fulfilling more than one role and it would be prudent to reduce their commitments.

Assistance in organising visits and AGMs etc. is also gratefully accepted and is usually required on a geographic basis.

If you believe you are able to help in any of the forgoing areas or you are prepared to give general assistance including assisting in cataloguing our library (books, images, moving images/ other) please do not hesitate to contact the Secretary or other Director or Society Officer for further information.



# **Appendix C**

## **Minutes of Previous Meeting**

### **(Draft) MINUTES OF 5<sup>th</sup> AGM OF THE NARROW GAUGE RAILWAY SOCIETY** **as a Company Limited by Guarantee** **and the** **70th AGM of the Society since its formation**

**Held on 8th May 2021 at 15:00 as a Virtual Meeting**

66 Members were present (by proxy): *Chris Askew, Kim Bailey, James Ballantyne, John Berry, Charles Bicheno, Anthony Bradley, Colin Brazier, Derek Brixey, Martin Brown, Harry Chandler, Glenn Clarkson, Paul Clifford, David Colenutt, David Collister, John Crocker, Peter Deacon, Mike Dickerson, Patrick Farrell, Peter Fischer, Michael Gray, Jonathan Green, Robert Griffiths, Alan Hayday, Brian Hillsdon, William Holmes, Robert Howes, Ian Hurst, Nick Hutt, John Huxley, Pete James, Lionel Kay, David Kerr, Brian Kiddy, Peter Kinnear, Bill Knight, Peter Lea, Chris Lemon, Jan Littwin, Don Mann, Jeremy Marsh, Keith Millard, Ian Montgomery, John Moore, Peter Moore, John Organ, Philip Pacey, Chris Page, Alistair Parsons, David Pratt, Mark Prescott, Andrew Roberts, Timothy Sanderson, John Scholes, John Spalding, Ray Stanton, Anthony Steele, Frank Stephen, Michael Stevens, Mike Swift, Keith Taylorson, Mike Tebbett, John Tennent, Viv Thorpe, Tony Tomkins, Guy Towner, Raymond Wilkinson.*

14 Members were virtually present: *Steven Beith, Moira Biggins, David Collins, Norman Drake, Graham Fairhurst, Adrian Garner, Robert Leadbetter, Andy Morgan, Sydney Leleux, Stewart Liles, Rick Osman, Adrian Shooter, Paul Webb, Richard Yudin.*

8 Directors were virtually present: *Steve Barber* (Company Secretary), *Paul Bennett* (NGN Editor), *Simon Guppy* (Visits Officer), *Jonathan James* (NGN Miniature Railways Editor), *Mick Morgan* (Webmaster), *Iain McCall* (Director for the Membership), *Chris Roberts* (Facebook Administrator), *Robert Watson* (eBay Shop).

5 Officers were virtually present: *Gerry Balding* (NGN UK Editor), *Graham Feldwick* (NGN H&A Editor), *Neil Limbrick* (Webmaster), *Stephen Moore* (Treasurer), *Peter Wilson* (Librarian).

The Meeting was chaired by *Steve Barber*.

It was determined that a quorum (5 Directors and 25 full Members (in attendance or by proxy)) was present and the meeting could conduct business.

The Secretary determined that notice of the meeting had been properly given in accordance with the Articles. The Meeting has been summarily adjourned and reconvened as a virtual meeting due to the Coronavirus pandemic.

A copy of the Minutes of the previous AGM was presented to the meeting, together with the Accounts, Officers' Reports and Appendices, which are available on the Society's website.

The Meeting commenced at 15:02

## **Informal business and reports from Directors, Officers and other groups**

### **Apologies for Absence**

Mike Jackson, Jill Everett, Robert Griffiths, David Matthewson, Nick Hutt, Glenn Roofthoof, Rod Briggs, Edward Draper, Rodney Thorne, Lord O'Neill, Hugh Sykes, Tim Hudson, Alan Burgess.

### **Minutes of 2020 AGM**

See Appendix C.

No objections, corrections or items notified had been received, the minutes were accepted.  
Proposed *Rick Osman* Seconded *Sydney Leleux*.



## **Committee Reports**

### **Chairman's Report**

It is a great regret that, for the second successive year, we cannot meet physically for our AGM and have to rely on technology to enable us to conduct our business.

Covid has dominated all our lives for over a year, and it certainly affected the Society. We did lose members during the 2019 renewal process that perhaps would have remained with us during normal times, and this was something we expected.

We also lost the ability for most of the year to meet in person – at the AGM and committee meetings, on visits organized by the Society, and at publicly open railways. There was a brief spell during the late summer and autumn when activity was possible, but the shadow of Covid seemed to hang over everything.

At the time of writing, it appears that there is a slow return to some sort of normality, and perhaps during the second half of this year we will be to resume meeting in groups.

All this meant that we have relied more than ever on our two journals to stay in touch. For most members, their arrival is the main point of contact with the society, and there has been no interruption in production – and I hope no loss of quality.

Having said all that, we are still in a strong position. Our financial situation remains healthy, and we have again decided not to increase what were already low subscription rates. We believe that we offer excellent value for money.

Maintaining membership numbers is our main priority and in particular attracting the younger generation. This is a problem affecting all societies covering a broad range of leisure interests, to which no-one has yet found a satisfactory answer.

We have had more changes than usual on the committee in the past year, but all the key positions have been filled quickly: our thanks for their contributions to all those who decided to leave, and to the newcomers for giving their time and abilities to help.

Looking forward, the path of the pandemic has been such that we dare not say that things will return to normal - whatever a new normal will be – without the twists and turns of Covid itself and governmental response.

We are planning a summer season of visits to railways but have no clear idea of when that will be possible, whether owners will be willing to accept the perceived risk of hosting a reasonable sized group, and whether members will be happy to attend. We would like to run a get together weekend to replace the AGM, and the same caveat applies.

The library, our great and underused resource, has also suffered from an inability to access the premises at Apedale.

As always, I will end with thanks to all those who have played a part in the life of the society in the past year – directors, committee members, volunteers and contributors to both magazines.

*Alan Burgess*

There were no questions in respect of the Chairman's Report.

### **Treasurer's Report (Appendix A)**

I took over the accounts midway through the year and my thanks to Robert Watson for holding the fort for the early part of the year. The Directors had decided that the accounts should be brought into the 21st century. My first 3 months were spent trying to migrate the accounts on to Sage software.

This I have done, and it has been a learning process for all as a consequence accounting costs are a bit higher this year. There is also an increase in the cost of the magazines mainly due to postage increase. Both Sales and Membership are keeping costs down by using other carriers where there are cost savings.

The financial situation is as reasonably solid even after a year with so many difficulties. The major part of the refunds is that for trips that were paid for and then cancelled due to Covid restrictions both early in the year and then again in

August, During the year we also experienced an occasional cost due to the change of committee members responsible for sales and the library. Even so we had a small surplus on the year.



There were no questions in respect of the Treasurer's Report.

### Secretary's Report

It's very disappointing that we cannot meet again this year due to the ongoing Covid-19 Pandemic, and from the Secretary's point of view it has been a most extraordinary year.

Last year, for the first time in the Society's sixty-nine years we were unable to meet, and at short notice my colleagues and I organised an electronic AGM meeting, carried out over several weeks on the Society's web pages. My thanks to *Mick Morgan* for his patience during this period.

This year we are trying a different approach with this meeting being hosted live on the internet. We hope that this will prove a success, attracting members who for various reasons would not normally attend.

Concern has been expressed that the Society is moving to disenfranchise members without the Internet, please be assured that this is not our intention and we continue to make accommodations for postal members.

The Society has its seventieth birthday in November this year and we hope to be able to organise an early Birthday Party in lieu of the AGM weekend, Lockdown circumstances permitting.

In 2020 I dealt with around 4500 pieces of email plus around 20 letters and around 30 postal voting forms: that's an average 12.5 items per day.

There have been some significant items occur during the past twelve months including two instances of infringement of our copyright (both settled amicably), some GDPR incidents (which must be reported by law, none endangered the security of members data) and the transfer of stock that I held to the Sales Officer. I have also dealt with the changes in the Society's executive line-up and organising committee meetings etc.

I have also served as the Secretary to the Electronic Presence sub-Committee which is doing great work in ensuring the Society stays up to date and relevant in this increasingly electronic age

It is also very sad that Coronavirus has impacted some of our older members, but I hope that with the vaccine now available, we can enjoy safe meetings in the near future.

*Steve Barber*

There were no questions in respect of the Secretary's Report.

### Membership Secretary's Report

Having been in post for a year the renewal process this time around has been relaxed compared to last year's 'in at the deep end' scenario.

Given the terrible nature of 2020 and with no major recruitment drives undertaken we ended the year with 33 fewer members. A good result all things considered, although sadly, 15 members passed away during the past membership year.

Working from current membership figures we are experiencing an improved renewal rate for 2021/22 than for the corresponding period last year; let's hope the trend continues.

The majority of our memberships are either full members or e-members, we have 92 members in other categories: 54 Associates, 11 Visits & e-NGN and 27 free of charge which include nine Life Members and reciprocal swaps with other railway organisations.

Once again, I have been amazed at the thoughtfulness and generosity of the members who have made financial donations to the Society as part of their membership renewal. Last year's donations were an impressive £1119 and so far, this year we have received £745 for which your Society is most grateful.

I recently reviewed some inherited Society papers containing past membership details. Back in 1959 our membership figures were 21 Life Members and 154 Annual members. During the past twenty-five years membership for full and e-members reached a peak of 1470 in 2000 and a low of 1174 in 2015. Currently we have 1301 members in these categories.



There were no questions in respect of the Membership Report.

## THE NARROW GAUGE Editor's Report

During the 2019/2020 membership year we maintained our ambition to continue the increased level of publication and pagination of The Narrow Gauge. We managed seven issues with a little over 280 pages – just over the previous record, and a credit to all our author's efforts.

Two were special issues - *Jim Stancliffe's* account of the Furka Mountain Railway, and *Brian Palmer's* story of garden railways in Suffolk. The latter is not a topic we have traditionally covered, but it was felt that it is a subject in which many members have an interest, and the text showed just how complicated what appears to be simple can be!

The lockdowns provided members with the time to go back into their records or start researching a specific topic, and we have benefitted in articles already printed, and some still to come. Other members sent us reminiscences of visits made some years ago in response to an appeal for material for Narrow Gauge News to replace reports of actual visits. Much of this remains available and is scheduled to be included in TNG.

All this means that I hold a reasonable collection of material, with the promise of more, but there is, yet again a high proportion of overseas texts, and I would be grateful for more on UK subjects.

It is some years since there was any major use of the narrow gauge in industry in the UK (with the honourable exception of Bord de Mona in Ireland), but could we persuade members to dig out pictures and notes and share them for all of us to enjoy? There must be members with memories of industrial lines and the early days of preservation; please consider writing a piece for us.

We know that some members are critical of the high level of miniature and overseas railway content in The Narrow Gauge. We can only print what is sent to us and are always willing to consider ideas for future special issues.

My thanks to members who have provided articles for The Narrow Gauge, and particularly those who sent their first texts during Covid. Do please carry on, we rely on you absolutely.

*Alan Burgess*

There were no questions in respect of the Narrow Gauge Editor's Report.

## NARROW GAUGE NEWS Editors' Reports

### (a) Editor's Report

Since the last AGM, six issues of Narrow Gauge News have been produced; once again I cannot thank too much my colleagues who edit sections of the publication; they are invaluable. *Alan Burgess* edits the Overseas section and *Gerry Balding* the British narrow gauge; *Jonathan James* is responsible for the Miniature Gauges section. *Graham Feldwick* continues to produce an outstanding Archaeology and History section and *Les Tindall* is developing the Modelling section. *Gerry Balding* and *Alan Burgess* proof-read each edition for me and manage to remove my most of my errors.

There have been issues of 36, 60, 52, 56, 40 and 40 pages. Of course, the main event of this period has been the Covid19 pandemic which has prevented many of the activities which normally fill our pages. Consequently, in May, we issued an invitation to members to send us suitable retrospective material. The July edition was largely composed of this content, but so overwhelming was the response that there have been some retro pages in all subsequent editions! Our hope is that up-to-date news will now return, and any remaining retro material has been passed to *Alan Burgess* for possible inclusion in The Narrow Gauge.

Undoubtedly the pandemic will mean that 2021 activity will be different from that of previous years, but first indications are that work on heritage railways is getting under way again and that soon passengers will be invited to return. If you are one of the workers or one of the passengers, do be sure to send a report and photos to the appropriate section editor. Overseas travel will probably remain restricted, so, overseas members, you are our best hope of international material.

The final editing of NGN still takes about a week of work. The section editors do a great deal too. I am willing to continue for a while if the membership so wish.

*Paul Bennett*

There were no questions in respect of the Narrow Gauge News Editor's Report.

### (b) UK and Ireland News Editor's Report



I would like to thank everyone who has been so helpful over the past year and to all those who have submitted reports and photos.



For obvious reasons, this has been a strange year. Reports from railways have continued to come in, albeit slower than in the past, and there is a lot of good work going on despite the pandemic showing the narrow gauge scene is still vibrant.

However, due to railways being closed for large parts of the year, lockdowns and travel restrictions there has been a very large decline in the number of members' visit reports. As railways begin to open up once again, I would please ask all members that when visiting railways or special events (or even volunteering on railways) to take the time to send me a brief report and photos for inclusion in the next Narrow Gauge News. It is these reports which are the lifeblood of the section.

We are well served by news and reports from English and Welsh heritage railways (although there are still a few notable exceptions). I am pleased that we are continuing to receive reports from Ireland.

There are still relatively few reports received about industrial narrow gauge railways. I suspect this is mainly due to the very limited use of narrow gauge railways in industry these days. If any member comes across any locations or news reports I would especially welcome any reports on these.

A number of railways have been very helpful in supplying reports and photos on request. This has proved fairly successful as they recognise the value of the publicity their reports and photos in Narrow Gauge News can provide. I would like to thank them for contributing and wish them every success.

I look forward to working with you all over the coming year.

*Gerry Balding*

There were no questions in respect of the UK and Ireland News Editor's Report.

### **(c) Miniature News Editor's Report**

This time last year we didn't expect the pandemic to impact life quite as much as it has. A number of miniature railways did manage to open last year outside of lockdown, but some have been shut since 2019. Sadly, a few lines haven't made it, the most notable being Kerr's Miniature Railway at Arbroath in Scotland.

We continued to receive a good supply of miniature railway reports for Narrow Gauge News when lockdown restrictions were eased but they reduced to a trickle during lockdown and over the winter months. A few people have continued to submit reports, often about work taking place in preparation for reopening, which has been appreciated.

It has been a difficult year for everyone and my involvement in the NGRS and other railway societies has helped me through this period. Working from home (rather than commuting into London), and then working on NGRS and other publications in the evenings and at weekends, has at times been a welcome distraction but at other times a bit of a challenge.

Hopefully, members will appreciate the work that goes on behind the scenes to keep the society going and I certainly appreciate the various current and historic reports that have been received from members.

Moving from paper to electronic means of communication has been a necessity during the often fast-changing situation, which I appreciate hasn't been ideal for the small minority of members with limited internet and email access. If you don't have email or internet access then maybe find a fellow member who has and can help you keep up to date with developments.

All being well, the roll-out of the vaccine will enable restrictions to be eased and railways to reopen. We may even be able to arrange some visits later in the year. I hope that members will support our miniature railways when they can reopen – and send me a report for the newsletter.

It would be great to hear from members who have private lines, so that we can keep the pages of Narrow Gauge News alive. Information about the location of these railways can be restricted to protect individuals' privacy. The same goes for model engineering societies and some of the lesser-known railways that we often don't hear about.

*Jonathan James*

There were no questions in respect of the Miniature News Editor's Report.

### **(d) Overseas Editor's Report**



Covid has severely impacted the flow of overseas news during the past year. We rely to a great extent on reports from UK members' travels. Government restrictions and a reluctance to travel meant that visits slowed to a trickle – and in many countries lines simply stopped operations.

Some news did come in from overseas sources, and members with foreign contacts or lucky enough to live where Covid had less effect than Europe. We relied largely on reminiscences of visits in days gone by to provide a reasonably lengthy overseas column, and thanks are due to the large number of members who contributed in this way. Far more, in fact, than *Paul* had space to use, and I still hold a head of material which will be transferred to future issues of The Narrow Gauge magazine.

Hopefully things will improve in the second half of the year once foreign travel from the UK is allowed (although many in our age group may find it difficult to raise the confidence to travel again).

Thanks again to *Paul Bennett* for making such an excellent job of NGN. I would not hesitate to say that this is best available coverage of the narrow gauge and miniature scene.

*Alan Burgess*

There were no questions in respect of the Overseas Editor's Report.

### **(e) Archaeology & History Editor's Report**

As always, many thanks to everyone who has submitted reports, recollections and photographs of former narrow gauge and miniature lines during the past year, which has enabled me to put together a wide-ranging and varied mix for the Archaeology & History Section (A & H) of NGN. I hope that this section has provided interest to everyone and has given a little inspiration to visit the places that have been included, to carry out further exploration and research.

Narrow gauge railways have long provided the ideal means of transport for so many applications, and whilst they continue to thrive and develop in a variety of situations, a large number are now but a memory. Yet so many of these still offer the opportunity for exploration, both through research and by visiting where they once ran, to gain a valuable insight into their purpose and how they were operated. Every narrow gauge and miniature railway has its place in railway history, and I hope that through the A & H Section we are keeping this alive and adding a little to it.

It's been good to see the A & H section continue to expand, which is of course due to the diversity of the reports that you send in. Whatever you find, do please send me a report and, if you can, a photograph or two. I'm also very happy to receive any queries from members about former lines and what you find and will try to help.

The use of narrow gauge wagons, and especially mine tubs, as roadside memorials has continued to expand, and sightings of these are also welcome. If possible, details of why they are there helps to link them to the past. Thank you for all those reported in 2020, which have also been added to the draft booklet to be produced shortly by the IRS.

*Graham Feldwick*

There were no questions in respect of the Archaeology & History Editor's Report.

### **(f) Modelling Secretary's Report**

Over the year there has been some input from NGRS members though it would be good to see more, especially "how I built it" articles (perhaps even a series of articles from a contributor) which could provide useful information/inspiration for others already modelling or thinking of taking up the hobby. Most reports from members have been in the 16mm "garden railway" scale so it would be nice to have scales were featured. Obviously with lockdown having been in force for quite some time exhibitions have been cancelled, meaning less reports and photos plus manufacturers seem to have reduced output or delayed new models.

Hopefully after June there will be an increase in information with exhibitions "opening up".

*Leslie Tindall*

There were no questions in respect of the Modelling Secretary's Report.

### **(g) Event Diary Editor's Report**

Given the circumstances of the last year, there have been no Events to Diarise. Your Editor looks forward to this situation changing in 2021/22

*Iain McCall*

There were no questions in respect of the Event Diary Editor's Report.

### **Sales Officer's Report**





The past 12 months has seen a lot of challenges due to the Covid pandemic. I took over as sales Officer in about April last year and a lot of the sales stock was inaccessible due to it being stored at the library at Apedale. Also, we have lost a few traders orders because shops were forced to close by the government.

The sales stock was transferred to me in about June and since then things have been going as smoothly as they can be. We have lost one trader due to the Ian Allan Book Store, in Waterloo, London, closing down but all of our other traders have been sending us orders quite frequently. We have also sold a large quantity of the Furka Mountain Railway Book to the Swiss Railway Society which we were very happy to deal with.

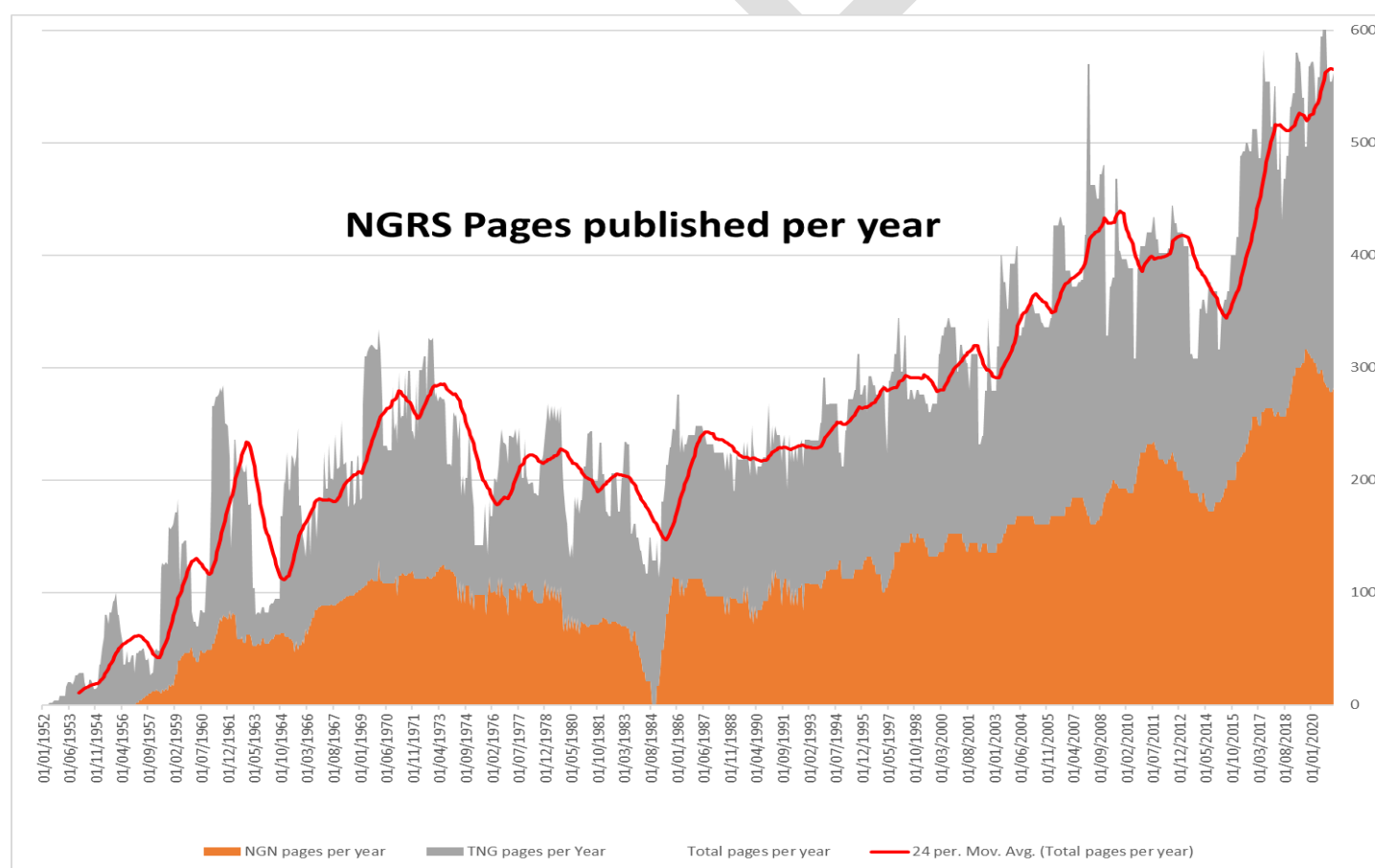
Society clothing has been a bit of an issue in the past 6-9 months. Due to shortages from suppliers and also problems with Covid-19 we have not been able to fulfil orders as fast as what we would have liked. To be able to make an order we need a minimum quantity of 8. So, if only one person orders we need to wait for another 7 which can have an impact on everyone else. I'm sorry, but this is the way it is at the moment, I'm looking at another supplier the used by the Ravenglass preservation society, which makes the clothing up as it is ordered. If you have any questions, please don't hesitate to contact me and I'll try and help as much as possible.

*Dan Holbrook*

There were no questions in respect of the Sales Officer's Report.

## Publishing Report

The Committee have concluded that the role of Publications Officer can be dealt with by the Magazine Editors, however, I thought that the graphic below would be of interest. It shows the volume of printed output produced by the Society from its formation in 1952 and reflects the increasing benefits of Society membership and the outstanding value that is delivered for your subscription, currently around 550 pages per year. The red line is a 24 month average.



*Steve Barber*

There were no questions in respect of the Publications Report.

## Legal Assistant's Report

The year 2020 came with its own unique challenges that impacted the NGRS' legal framework. Principal among them was the question of whether the Society could hold virtual meetings since it would be impossible to entertain in-person meetings for much of the year. Given no real alternatives except to proceed with virtual meetings, the Board proceeded in an attempt to be fair and transparent for all members.



2020 also had its more mundane issues, primarily centred about copyright and copyright infringement. Although not impacted by Covid-19, these issues did present questions surrounding what law would apply while in transition from Brexit in addition to sorting through the complex world of copyright law. We were presented also with one possible question of copyright infringement. I am pleased to report that the infringement issue was resolved amicably.

One of the other on-going issues was discussions with Moseley Railway Trust concerning rental space for our library. As of this writing, no issues have been resolved although the parties remain cordial with one another.

I expect that 2021 will involve more questions of copyright law and may also get us into questions of trademark law, especially as a new NGRS website is created.

*Ken Matticks*

There were no questions in respect of the Legal Assistant's Report.

### **Librarian's Report**

This has been a challenging and unusual year for your Library, with social restrictions and lockdowns that have meant physical closure for and very limited access, even for the Library team.

But before dealing with the year and our plans for the future, may I thank my colleagues *Iain Logie* and *Martin O'Keefe*, Assistant Librarian, who have been involved with the Library for a number of years and without whose deep knowledge and hard work the Library would really struggle to provide the great service it does. *Stephen Teather* and *Rick Bennett* joined us during the year; thought they have had little opportunity to access the Library they have supported *Iain* and *Martin* in continuing the scanning project.

The Library, as I am sure most members know, is situated at Apedale, by courtesy of the Moseley Railway Trust, who have been, as always, great supporters and helpers to us; we are most grateful to them for their friendship and assistance. We occupy two rooms in their services building, which now can only be described as "full", and also a shipping container adjacent (fitted by MRT with electricity and humidity management systems) – best described as "overfull"! However MRT have offered us a further container as back-up storage which we hope to agree terms on shortly and occupy this summer.

In the longer run we continue to support MRT on their plans for their intended new Museum building, the foundations for which are already in place, which it is intended will contain a modern and larger dedicated Library space with easier access for all. That is a way off yet, but progress continues to be made.

This year has concentrated on the digitalisation project begun by *Jim Hay*. The long-term intention is to make a digital copy of anything in our collection which could not be replaced – which covers a lot of material, including slides, prints, negatives, and drawings, but also of course, our subject files, with notes, magazine excerpts, letters, and drawings. We also hold the Motor Rail drawings collection, some on paper and some on microfiche, which will require some long time thought as microfiche technology becomes obsolete.

Digitalisation is the answer to both making access to the collections easier and to safeguarding them. To achieve this within a reasonable period of time we realise means that we will need to acquire a new generation of scanning and storing technology. Not only this, we also need to maintain a live archive of what we have scanned so that we can search quickly and effectively. All this will cost money, alas, and we are hoping to persuade the Committee of your Society to authorise investment soon to do this.

NGRS members and others continue to be very generous in donating and bequeathing very fascinating and often unique material to the Library. That is very much appreciated; we cannot not mention individual donors in the limited space here, but must cite the *Dave Billmore* bequest, an extraordinarily valuable resource some fruits of which have appeared in NGN recently.

We have continued to receive, mostly by email, a steady volume of requests for information on many subjects – some are mentioned in the current NGN - and *Martin* and *Iain* demonstrate an extraordinary knowledge of every aspect of narrow gauge railways. We have not been able to have open days in 2020, or, so far, in 2021, but as the world returns to normal we hope to reintroduce a regular programme of access and to show off the collection. We look forward to seeing you then.

*Peter Wilson*

There were no questions in respect of the Librarian's Report.

### **Assistant Librarian's Report**

Report not currently available



There were no questions in respect of the Assistant Librarian's Report.

### **Film & Video Archivist's Report**

No enquiries or loans over the whole year.

The library is open.

No additions to library although some 1960s reel-to-reel audio recordings (mostly Vale of Rheidol) will be transferred to digital.

Transfer of library DVDs to external storage as archive is currently paused.

Video Librarian is prepared to remain in post unless any other member wishes to take over.

*Mike Jackson*

There were no questions in respect of the Film & Video Archivist's Report.

### **Webmaster's Report**

A very quiet year in many ways with almost no visits and a virtual AGM. Visits, like Membership and member mailings are now dealt with through Membermojo. Facebook rather than the website seems to be leading the way in marketing the NGRS to those outside the new company.

Obviously our Local Area Groups and their visitors have been locked down like everyone else and so for some, as with our committee, change has had to be made and Zoom meetings have become their normal communication method.

There have been no member contributions of pictures, videos or articles to the website this year, although these may be being made directly to magazine editors or to social media. Please consider sending in notes and/or pictures, members and prospective members do find them interesting and useful. For information, the website address remains <http://ngrs.org> (or [www.ngrs.org](http://www.ngrs.org)).

You could also have sent them to Yahoo Group "NGRailwaySociety", which had about 247 members, until last December when Yahoo closed it's Groups down. Although we moved to a new IO Groups "NGRailwaySociety" it only currently has 56 members. The new [NGRailwaySociety.groups.io](http://NGRailwaySociety.groups.io) is an un-moderated site and does provide a trickle of news, views and questions to a wide audience at home and abroad. Advance announcements can be useful via this medium.

It is however clear that the NGRS Group audiences are very different from IRS Group and Facebook visitors. Facebook in particular attracts a more vibrant group of people who require instant attention and answers. Unlike the IRS, the move to IO Groups does not seem to be particularly useful to members and unless more use of it is made of it, consideration will definitely be given to closing it down this year. Do promote the group among your friends because the NGRS membership is a vast knowledge pool which should be shared with people of similar interests.

TNG's and NGN's 1 to 100 are now online via our Library page and make a very interesting read. Once Covid is over and the library can be re-organised, it is planned to make a good index of publications available to members.

The 14 years since I took the website over from *John Rowlands* (2007) have passed very quickly and while I have enjoyed my retirement hobby very much, technology has moved on faster than myself or my equipment. Having put some plans to one side and while my eyes and body still function reasonably well, it is time that someone else takes it forward.

From the 2021 AGM, the website will therefore be handed over to *Neil Limbrick* ([webmaster@ngrs.org](mailto:webmaster@ngrs.org)).

My wife (*Andy*) and I have had the pleasure of meeting some very lovely NGRS people over the years and I know I am leaving the Society in very capable hands. We look forward to meeting up on many Society visits in the future, once we can all get back to 'normal'.

*Mick Morgan*

There were no questions in respect of the Webmaster's Report.

### **Facebook Administrator's Report**



I will start this year's AGM report with thanks, to all the Facebook users who have contributed to the NGRS group by posting photos and links, or by commenting in discussion threads, thereby keeping interest going for other users during the recent unparalleled times. Thanks also to my co-administrator *Simon Guppy*, who is much quicker than I am in responding to new requests to join the group and other admin tasks.

The Facebook group continues to grow in members with 3177 as of 18th March 2021. Of these 1823 were active in the group during the previous 28 days.

Facebook will have a part to play once NGRS railway visits recommence, in advertising them to potential NGRS members. There is a pool of narrow gauge enthusiasts who enjoy interacting with Facebook but have not as yet joined the Society. Showing them some of the benefits of joining, such as visits to otherwise private sites, is a useful recruitment tool.

The Facebook page (as opposed to the group) remains fairly static but will also receive details of planned visits once available.

There are of course those who do not wish to become involved with Facebook in any way. Because of this there will never be any NGRS official news disseminated only via Facebook. However, there is a lot of material appearing on Facebook, posted by people from all over the World, which is not easily accessible by other means.

*Chris Roberts*

There were no questions in respect of the Facebook Administrator's Report.

### Visit's Officers Report

Firstly, I would like to introduce myself as your new Visit Officer, a role which I have now fully taken over. In terms of my background, I have been an NGRS member for about 5 years; I have previously been a local area organiser for the Inter-City Railway Society, Chairman of the Western Rail Society, and have been organising railway visits in one form or another for over 40 years.

When I took on the role, I was challenged by the Society's Committee to tackle a few things:

- 1) To introduce an Online system for visit booking;
- 2) To tidy up the administration around visit organisation;
- 3) To extend the scope of the Society's visits, introducing new locations to our fixture list.

The Online Booking System has been implemented using Membermojo, on which our membership records are held. I thoroughly tested the facility during 2020, and I was able to put it live last summer. Acceptance by members has been very good, and there is general consensus that the system is working well, saving time both for members and for myself. An ongoing measure of success will be for 90% of bookings to be made online. The facility to book via traditional means – using booking forms and paying by cheque – remains, and where numbers are limited, I intend to reserve 10% of places for postal bookings.

All visits are now subject to a fairly straightforward risk assessment, which is a way of making sure that visits do not present any unexpected risks to participants. A record is now kept of those members participating in visits, and members are asked to sign in on arrival. Participants now receive comprehensive joining instructions (which include any specific Health & Safety notices) prior to the visit.

2020 was, of course, a disappointing year in terms of visits, with COVID-19 almost wiping out our visit programme. In the end, we managed to arrange 2 visits, in the space of a couple of weeks in August. We had an "access all areas" visit to Apedale on 20th August, followed by a visit to the Moseley Heritage Museum, near Redruth in Cornwall on 30th August. My thanks go to *Simon Lomax* and *Colin Saxton* respectively for allowing these visits to go ahead.

We did have a number of other visits arranged during August and September, and these were attracting a good level of bookings. Sadly, the second wave of COVID-19 led to the cancellation of these visits. I am hoping to rearrange some of those cancelled visits for 2021.

In terms of extending the scope of our visits, I have been making contact with a large number of railway owners over the last few months and have been positively encouraged by the general response; many of them are keen to host a visit from the NGRS, once the COVID-19 restrictions are lifted. I am currently trying to get dates in diaries for visits, and I am hopeful that we can have visits back up-and-running by around July or August. With a late start to 2021's visit programme, I will be happy if I am able to arrange around 10-12 visits this year.

I am strictly the Visit Officer (South), and we had hoped to have a northern equivalent in situ by now. In the interim, I am organising a few visits to northern locations, but I would like to take this opportunity to appeal for somebody to come forward to help with visit organisation for northern (and Scottish) locations.



There were no questions in respect of the Visits Officer's Report.

### **Publicity/ Exhibition Officer's Report**

Report not currently available

*Vacant Position*

There were no questions in respect of the Publicity/ Exhibition Officer's Report.

### **Director for the Membership's Report**

The role of "Director for the Membership" is a new one for the Society, and some members may be wondering what it entails. Truth be told, at times so do I! It can perhaps be thought of as representing the best interests of the membership at Committee discussions. With that description in mind, I am delighted to report that during a difficult year with many new challenges, my observations are that the Committee has indeed acted at all times in the best interests of the membership. Making sure that as many of the Society functions as possible continue to be accessible to as many members as possible during the pandemic has been no mean feat.

I am happy to serve for another year if so desired by the membership

*Iain McCall*

There were no questions in respect of the Director for the Membership's Report.

### **Electronic Presence sub-Committee Report**

An Electronic Presence sub-committee was convened during a Committee Meeting earlier in 2020, with a brief as follows:

"The role of the sub-Committee will be to investigate, examine, review options and make recommendations to the Committee, in respect of all existing electronic data and data systems belonging to the Society (whether held personally or otherwise), and how it may best be managed, retained, preserved and made robust, so as to be disaster proof. In addition, it shall carry out all of the above in respect of systems that are not currently managed electronically, and /or should be transferred to the ownership of the Society, which they consider would benefit from being so managed".

The sub-committee has now considered the Society's requirements, and is now in the process of putting together recommendations, which will be put to the wider Society committee meeting in May 2021.

I would like to thank the following committee members for their input and contributions to this project:

- *Steve Barber*
- *Jill Everitt*
- *Dan Holbrook*
- *Neil Limbrick*
- *Iain McCall*
- *Ken Matticks*
- *Mick Morgan*
- *Robert Watson*
- *Peter Wilson*

*Simon Guppy*

There were no questions in respect of the Electronic Presence sub-Committee's Report.

### **Area Group Secretary's Reports**

#### **Lincolnshire Area**

*Perchance it is not dead but sleepeth*

The Group had had a moderately successful period up until COVID with some very good speakers – the Sri Lankan Sentinel Railcars, Mineral Lines of the Yorkshire Dales, the Railways of Southampton Docks, Crowle Peatworks Project & Humberside Brickworks, (and not forgetting a memorable visit from Peter Van Zeller, which had visitors from Teeside)



but always with the underlying thoughts of an ageing membership. During the period we sadly lost (after long illnesses) two members: Mick Drake & Dave Billmore – losses which affected members greatly.

Obviously, things closed down last March, and nothing has happened since.

What the future holds I know not – we will need to find a new meeting room although a number of speakers are lined up. It has been suggested that we close the Group – having founded it nearly 40 years ago this is something I am very loathe to do and my present thought is that we will continue on an informal basis – perhaps meeting in people's homes. Further news will follow.

*Perchance it is not dead but sleepeth*

*Tim Hudson*

There were no questions in respect of the Lincolnshire Area Report.

### **London & Southern Area**

Report not currently available

There were no questions in respect of the London & Southern Area Report.

### **Yorkshire Area**

Report not currently available

There were no questions in respect of the Yorkshire Area Report.





## Formal business of the Narrow Gauge Railway Society as a Limited Company.

Upon motion duly made the financial statements for the period ended 31 December 2020 and the accountants' report thereon and the directors' report was accepted (the Secretary to attach a copy to the Minutes. (Appendix A))  
Votes: 93 (66 Proxy+14 virtual+13 Exec)

In accordance with the Articles, there was an election of Directors, each member virtually present or by proxy casting a vote. The Directors standing were as follows:

Alan Burgess (Chairman & The Narrow Gauge Editor)

Votes: 93 (66 Proxy+14 virtual+13 Exec)

Steve Barber (Company Secretary)

Votes: 93 (66 Proxy+14 virtual+13 Exec)

Paul Bennett (Narrow Gauge News Editor)

Votes: 93 (66 Proxy+14 virtual+13 Exec)

Jill Everitt (Membership Secretary)

Votes: 93 (66 Proxy+14 virtual+13 Exec)

Simon Guppy (Visits Officer)

Votes: 93 (66 Proxy+14 virtual+13 Exec)

Chris Roberts (Facebook Administrator)

Votes: 93 (66 Proxy+14 virtual+13 Exec)

Jonathan James (Miniature News Editor (Narrow Gauge News))

Votes: 93 (66 Proxy+14 virtual+13 Exec)

Iain McCall (Director for the Membership)

Votes: 93 (66 Proxy+14 virtual+13 Exec)

Upon motion duly made the foregoing persons were elected to serve as Directors for one year or until the next members meeting

## **Other Informal Business**

Details of the Company Officer structure and contacts details are in Appendix B

## **Company Officers**

Since the previous AGM *Mike Jackson* has stood down as Visits Officer and *Rod Bryant* has stood down as Visits Officer North. *Neil Limbrick* has joined us as the incoming Webmaster

The Committee Officers are currently: *Steve Moore* (Treasurer), *Peter Wilson* (Librarian), *Martin O'Keefe* (Assistant Librarian), *Mike Jackson* (Film and Video Archivist), *Gerry Balding* (NGN British and Irish Editor), *Graham Feldwick* (NGN Archaeology & History Editor), *Dan Holbrook* (Sales Officer), *Neil Limbrick* (Webmaster), *Ken Matticks* (Legal Assistant) and *Leslie Tindall* (Modelling Secretary).

## **Vacancies**

Currently there are Vacancies for:

- Visit Officer North
- Publicity / Exhibitions Officer(s)
- Assistants for the Library and to reduce the administrative workload on the Committee

## **Next Year's AGM**

It is hoped that next year's AGM can be held at Vale of Rheidol Railway on 14th May 2022, Covid-19 restrictions permitting

Should public health restrictions permit it is hoped to organise an early 70th Birthday Weekend later in 2021 in lieu of today's AGM weekend.



## Any other Business.

### Member Voting form Comments

Thanks to the officers of the Company and Society for all the works produced over the last difficult year.

*Harry Chandler*

Thank you all for all what you do.

*Chris Askew*

Thanks for all you and the committee do for the Society and I look forward to a return to a more normal AGM next year!

*Mike Dickerson*

I attach my e-vote. Hope all goes well, and I send my "humble and hearty" thanks to you and all the other officers for all the splendid work you put in for us.

Cheers (and roll-on 12th April)

*Peter Deacon*

So, the normal members of the Society, in addition to not being able to attend the A.G.M (Which I personally would not – but that is beside the point) cannot access the report + Accounts, and no doubt will miss-out on the revamped visits programme – because those on-line (whatever that is) will have reserved all the places on visits and the 10% will not be able to participate

If this discrimination continues I shall not renew my membership in future years

Stop acting as if you're Unilever, RTZ, Glaxo SK et al and become a Society for those interested solely in N.G railways – that would be a good start

(transcribed from a handwritten note and amended from all capitals)

*Signature Unclear*

Thank you for your volunteer time

*Richard Yudin*

Thanks to all Directors for the work carried out during the past year.

*Frank Stephen*

I hope it goes well...

*David Matthewson*

Please pass my thanks onto the officers for all their hard work to make the society such an interesting and useful organisation.

*Nick Hutt*

Unfortunately I shall be away at the time so will not be able to participate but hope all goes well and that many will be able to 'attend'.

*Rod Briggs*

### Questions and Comments from Members present

In response to the Comment "Gentlemen you have the floor", *Moira Biggins* pointed out that there were a few women in the Society but added that she took no offence.

*Adrian Garner* commented: That he would like to thank the Committee for their efforts throughout the year, and that he considered it an excellent organisation.

*Norman Drake* endorsed *Adrian's* comment and added that he wished he was able to join us in the UK for the AGM as he was in Western Australia. He especially praised the magazines and was impressed that we now produce an average of 550 pages a year and that it was really good value. He thanked the Committee for all the effort they put in on behalf of the Members.

*David Collins* asked about the timing of the AGM and the fact that it clashed with the RH&DR Gala, The Secretary responded that this has been an issue for many years due to the number of events taking place and the best





compromise achieve is the second Saturday in May as this avoids clashes with most other NG and Miniature railway events.

*Sydney Leleux* asked: If we could simulcast the AGM on zoom in future so that those who are unable to attend, for whatever reason, can take part. The Webmaster responded that he had been working on similar things in his day job and that we will consider making Zoom available if there was adequate broadband at the host railway. This was widely endorsed by other members present.

*Norman Drake* was disappointed at the poor turnout from the Members for the Zoom Meeting being only a few less than at a physical meeting.

*Robert Leadbetter* commented: That the virtual meeting put names to faces, so now he was able to identify everyone.

*Sydney Leleux* asked: if name Badges/ Stickers could be provided at future AGMs and Visits so that Members could be identified. *Post meeting note: Simon Guppy is investigating the provision of larger badges and stickers for delegates to be used at visits as well.*

The Secretary announced that the Directors had passed a resolution that Mick Morgan, Andy Morgan and Robert Watson be made Life Members in recognition of their service to the Society. *Norman Drake* and *Sydney Leleux* endorsed this move and stated that they would have proposed and seconded it if the Directors had not already made the decision. *Andy Morgan* thanked the Committee for the honour on behalf of *Mick* and herself and looked forward to joining us at many visits.

There being no further business the meeting was closed at 15:30 on 8th May 2021

## Appendix A 2020 Accounts



DRAFT



**NARROW GAUGE RAILWAY SOCIETY  
DIRECTORS' REPORT AND  
UNAUDITED FINANCIAL STATEMENTS FOR  
THE YEAR ENDED 31 DECEMBER 2020**



Nigel Ricks & Company Ltd

Chartered Accountants

42 Glebe Street  
Loughborough  
Leicestershire  
LE11 1JR

**Narrow Gauge Railway Society  
Directors' Report and Unaudited Financial Statements  
For The Year Ended 31 December 2020**



**Contents**

	<b>Page</b>
Company Information	1
Directors' Report	2
Accountant's Report	3
Income and Expenditure Account	4
Balance Sheet	5—6
Notes to the Financial Statements	7—10
The following pages do not form part of the statutory accounts:	
Detailed Income and Expenditure Account	11

**Narrow Gauge Railway Society  
Company Information  
For The Year Ended 31 December 2020**



**Directors**

Mr Philip Thompson  
Mr Robert Watson  
Mr Alan Burgess  
Mr Christopher Roberts  
Mr Stephen Barber  
Mr Jonathan James  
Mr James Hay  
Mr Paul Bennett  
Mr Michael Morgan

**Secretary**

Mr Stephen Barber

**Company Number**

09925208

**Registered Office**

246 Hillbury Road  
Warlingham  
Surrey  
CR6 9TP

**Accountants**

Nigel Ricks & Company Ltd  
Chartered Accountants  
42 Glebe Street  
Loughborough  
Leicestershire  
LE11 1JR

**Narrow Gauge Railway Society**  
**Company No. 09925208**  
**Directors' Report For The Year Ended 31 December 2020**



The directors present their report and the financial statements for the year ended 31 December 2020.

**Statement of Directors' Responsibilities**

The directors are responsible for preparing the Directors' Report and the financial statements in accordance with applicable law and regulations.

Company law requires the directors to prepare financial statements for each financial year. Under that law the directors have elected to prepare the financial statements in accordance with United Kingdom Generally Accepted Accounting Practice (United Kingdom Accounting Standards and applicable law). Under company law the directors must not approve the financial statements unless they are satisfied that they give a true and fair view of the state of affairs of the company and of the profit or loss of the company for that period. In preparing the financial statements the directors are required to:

- select suitable accounting policies and then apply them consistently;
- make judgments and accounting estimates that are reasonable and prudent;
- prepare the financial statements on the going concern basis unless it is inappropriate to presume that the company will continue in business.

The directors are responsible for keeping adequate accounting records that are sufficient to show and explain the company's transactions and disclose with reasonable accuracy at any time the financial position of the company and enable them to ensure that the financial statements comply with the Companies Act 2006. They are also responsible for safeguarding the assets of the company and hence for taking reasonable steps for the prevention and detection of fraud and other irregularities.

**Directors**

The directors who held office during the year were as follows:

Mr Philip Thompson	RESIGNED	06/01/2020
Mr Robert Watson		
Mr Alan Burgess		
Mr Christopher Roberts		
Mr Stephen Barber		
Mr Jonathan James		
Mr James Hay	RESIGNED	14/03/2020
Mr Paul Bennett		
Mr Michael Morgan		

**Small Company Rules**

This report has been prepared in accordance with the special provisions relating to companies subject to the small companies regime within Part 15 of the Companies Act 2006.

By order of the board

-----

Date

**Narrow Gauge Railway Society  
Accountant's Report  
For The Year Ended 31 December 2020**



In accordance with the engagement letter dated , and in order to assist you to fulfil your duties under the Companies Act 2006, we have compiled the financial statements of the company from the accounting records and information and explanations you have given to us.

This report is made to the directors in accordance with the terms of our engagement. Our work has been undertaken to prepare for approval by the directors the financial statements that we have been engaged to compile, to report to the directors that we have done so, and to state those matters that we have agreed to state to them in this report and for no other purpose. To the fullest extent permitted by law, we do not accept or assume responsibility to anyone other than the Company and the Company's directors for our work or for this report.

You have acknowledged on the balance sheet as at year ended 31 December 2020 your duty to ensure that the company has kept proper accounting records and to prepare financial statements that give a true and fair view under the Companies Act 2006. You consider that the company is exempt from the statutory requirement for an audit for the year.

We have not been instructed to carry out an audit of the financial statements. For this reason, we have not verified the accuracy or completeness of the accounting records or information and explanations you have given to us and we do not, therefore, express any opinion on the financial statements.

-----

Date

Nigel Ricks & Company Ltd  
Chartered Accountants

42 Glebe Street  
Loughborough  
Leicestershire  
LE11 1JR

**Narrow Gauge Railway Society  
Income and Expenditure Account  
For The Year Ended 31 December 2020**



	Notes	2020 £	2019 £
<b>TURNOVER</b>		43,579	43,415
Cost of sales		(37,843)	(38,607)
		<hr/>	<hr/>
<b>GROSS SURPLUS</b>		5,736	4,808
Administrative expenses		(4,313)	(7,009)
		<hr/>	<hr/>
<b>OPERATING SURPLUS/(DEFICIT)</b>		1,423	(2,201)
Other interest receivable and similar income		635	949
		<hr/>	<hr/>
<b>SURPLUS/(DEFICIT) BEFORE TAXATION</b>		2,058	(1,252)
Tax on Surplus/(deficit)		(376)	158
		<hr/>	<hr/>
<b>SURPLUS/(DEFICIT) AFTER TAXATION BEING SURPLUS/(DEFICIT) FOR THE FINANCIAL YEAR</b>		<hr/> <hr/> 1,682	<hr/> <hr/> (1,094)

The notes on pages 7 to 10 form part of these financial statements.



**Narrow Gauge Railway Society  
Balance Sheet  
As at 31 December 2020**



		2020		2019	
	Notes	£	£	£	£
<b>FIXED ASSETS</b>					
Intangible Assets	3		250		250
Tangible Assets	4		30,600		30,851
			<u>30,850</u>		<u>31,101</u>
<b>CURRENT ASSETS</b>					
Stocks	5	1,391		1,391	
Debtors	6	5,490		4,862	
Cash at bank and in hand		100,540		105,312	
		<u>107,421</u>		<u>111,565</u>	
<b>Creditors: Amounts Falling Due Within One Year</b>	7	(6,919)		(12,996)	
		<u></u>		<u></u>	
<b>NET CURRENT ASSETS (LIABILITIES)</b>			100,502		98,569
			<u></u>		<u></u>
<b>TOTAL ASSETS LESS CURRENT LIABILITIES</b>			131,352		129,670
			<u></u>		<u></u>
<b>NET ASSETS</b>			131,352		129,670
Income and Expenditure Account			131,352		129,670
			<u></u>		<u></u>
<b>MEMBERS' FUNDS</b>			131,352		129,670
			<u></u>		<u></u>

**Narrow Gauge Railway Society  
Balance Sheet (continued) As  
at 31 December 2020**



For the year ending 31 December 2020 the company was entitled to exemption from audit under section 477 of the Companies Act 2006 relating to small companies.

**Directors' responsibilities:**

- The members have not required the company to obtain an audit in accordance with section 476 of the Companies Act 2006.
- The directors acknowledge their responsibilities for complying with the requirements of the Act with respect to accounting records and the preparation of accounts.
- These accounts have been prepared in accordance with the provisions applicable to companies subject to the small companies' regime.

On behalf of the board

-----

Date

The notes on pages 7 to 10 form part of these financial statements.

**Narrow Gauge Railway Society  
Notes to the Financial Statements  
For The Year Ended 31 December 2020**



**1. Accounting Policies**

**1.1. Basis of Preparation of Financial Statements**

The financial statements are prepared under the historical cost convention and in accordance with the FRS 102 Section 1A Small Entities - The Financial Reporting Standard applicable in the UK and Republic of Ireland and the Companies Act 2006.

**1.2. Turnover**

Turnover is measured at the fair value of the consideration received or receivable, net of discounts and value added taxes. Turnover includes revenue earned from the sale of goods and from the rendering of services. Turnover is reduced for estimated customer returns, rebates and other similar allowances.

**Sale of goods**

Turnover from the sale of goods is recognised when the significant risks and rewards of ownership of the goods has transferred to the buyer. This is usually at the point that the customer has signed for the delivery of the goods.

**Rendering of services**

Turnover from the rendering of services is recognised by reference to the stage of completion of the contract. The stage of completion of a contract is measured by comparing the costs incurred for work performed to date to the total estimated contract costs. Turnover is only recognised to the extent of recoverable expenses when the outcome of a contract cannot be estimated reliably.

**1.3. Intangible Fixed Assets and Amortisation - Other Intangible**

Other intangible assets are .... It is amortised to income and expenditure account over its estimated economic life of ... years.

**1.4. Tangible Fixed Assets and Depreciation**

Tangible fixed assets are measured at cost less accumulated depreciation and any accumulated impairment losses. Depreciation is provided at rates calculated to write off the cost of the fixed assets, less their estimated residual value, over their expected useful lives on the following bases:

Leasehold	25% Straight Line
Fixtures & Fittings	33% Straight Line

**1.5. Stocks and Work in Progress**

Stocks and work in progress are valued at the lower of cost and net realisable value after making due allowance for obsolete and slow-moving stocks. Cost includes all direct costs and an appropriate proportion of fixed and variable overheads. Work-in-progress is reflected in the accounts on a contract by contract basis by recording turnover and related costs as contract activity progresses.

**Narrow Gauge Railway Society**  
**Notes to the Financial Statements (continued)**  
**For The Year Ended 31 December 2020**



**1.6. Taxation**

Income tax expense represents the sum of the tax currently payable and deferred tax.

The tax currently payable is based on taxable profit for the year. Taxable profit differs from profit as reported in the statement of comprehensive income because of items of income or expense that are taxable or deductible in other year and items that are never taxable or deductible. The company's liability for current tax is calculated using tax rates that have been enacted or substantively enacted by the end of the reporting period.

Deferred tax is recognised on timing differences between the carrying amounts of assets and liabilities in the financial statements and the corresponding tax bases used in the computation of taxable profit. Deferred tax liabilities are generally recognised for all taxable timing differences. Deferred tax assets are generally recognised for all deductible temporary differences to the extent that it is probable that taxable profits will be available against which those deductible timing differences can be utilised. The carrying amount of deferred tax assets is reviewed at the end of each reporting period and reduced to the extent that it is no longer probable that sufficient taxable profits will be available to allow all or part of the asset to be recovered.

Deferred tax assets and liabilities are measured at the tax rates that are expected to apply in the period in which the liability is settled or the asset realised, based on tax rates (and tax laws) that have been enacted or substantively enacted by the end of the reporting period. Deferred tax liabilities are presented within provisions for liabilities and deferred tax assets within debtors. The measurement of deferred tax liabilities and asset reflects the tax consequences that would follow from the manner in which the Company expects, at the end of the reporting period, to recover or settle the carrying amount of its assets and liabilities.

Current or deferred tax for the year is recognised in profit or loss, except when they related to items that are recognised in other comprehensive income or directly in equity, in which case, the current and deferred tax is also recognised in other comprehensive income or directly in equity respectively.

**2. Average Number of Employees**

Average number of employees, including directors, during the year was as follows:

	<b>2020</b>	<b>2019</b>
Office and administration	10	10
	10	10

**3. Intangible Assets**

	<b>Other £</b>
<b>Cost</b>	
As at 1 January 2020	250
As at 31 December 2020	250
<b>Net Book Value</b>	
As at 31 December 2020	250
As at 1 January 2020	250

**Narrow Gauge Railway Society**  
**Notes to the Financial Statements (continued)**  
**For The Year Ended 31 December 2020**



**4. Tangible Assets**

	<b>Land &amp; Property</b>			
	<b>Freehold</b>	<b>Leasehold</b>	<b>Fixtures &amp; Fittings</b>	<b>Total</b>
	<b>£</b>	<b>£</b>	<b>£</b>	<b>£</b>
<b>Cost</b>				
As at 1 January 2020	30,302	617	1,440	32,359
As at 31 December 2020	30,302	617	1,440	32,359
<b>Depreciation</b>				
As at 1 January 2020	-	578	930	1,508
Provided during the period	-	39	212	251
As at 31 December 2020	-	617	1,142	1,759
<b>Net Book Value</b>				
As at 31 December 2020	30,302	-	298	30,600
As at 1 January 2020	30,302	39	510	30,851

**5. Stocks**

	<b>2020</b>	<b>2019</b>
	<b>£</b>	<b>£</b>
Stock - materials and work in progress	1,391	1,391
	1,391	1,391

**6. Debtors**

	<b>2020</b>	<b>2019</b>
	<b>£</b>	<b>£</b>
<b>Due within one year</b>		
Trade debtors	-	223
Prepayments and accrued income	1,339	330
Corporation tax recoverable assets	-	158
	1,339	711
<b>Due after more than one year</b>		
Other debtors	4,151	4,151
	4,151	4,151
	5,490	4,862

**Narrow Gauge Railway Society**  
**Notes to the Financial Statements (continued)**  
**For The Year Ended 31 December 2020**



**7. Creditors: Amounts Falling Due Within One Year**

	<b>2020</b>	<b>2019</b>
	<b>£</b>	<b>£</b>
Trade creditors	1,506	180
Corporation tax	218	-
Subs received in advance	-	12,416
Accruals and deferred income	5,195	400
	<u>6,919</u>	<u>12,996</u>

**8. General Information**

Narrow Gauge Railway Society is a private company, limited by shares, incorporated in England & Wales, registered number 09925208. The registered office is 246 Hillbury Road, Warlingham, Surrey, CR6 9TP.

**Narrow Gauge Railway Society Detailed  
Income and Expenditure Account For The  
Year Ended 31 December 2020**



	<b>2020</b>		<b>2019</b>	
	<b>£</b>	<b>£</b>	<b>£</b>	<b>£</b>
<b>TURNOVER</b>				
Sales		43,579		43,415
<b>COST OF SALES</b>				
Opening stock and work in progress	(1,391)		(982)	
Membership Servicing	-		748	
Magazine Costs	25,001		21,507	
Auction Costs	82		42	
Visit Costs	6,126		4,486	
Binders and Other Costs	895		(89)	
Packaging costs	7,130		11,504	
Closing stock and work in progress	-		1,391	
		<u>(37,843)</u>		<u>(38,607)</u>
<b>GROSS SURPLUS</b>		5,736		4,808
<b>Administrative Expenses</b>				
Travel expenses	423		386	
Insurance	471		1,487	
Advertising and marketing costs	399		271	
Accountancy fees	870		360	
Professional fees	26		180	
Library Costs	1,447		2,766	
Bank charges	427		659	
Depreciation	250		430	
AGM Expenses	-		470	
		<u>(4,313)</u>		<u>(7,009)</u>
<b>OPERATING SURPLUS/(DEFICIT)</b>		1,423		(2,201)
<b>Other interest receivable and similar income</b>				
Other interest receivable	635		949	
		<u>635</u>		<u>949</u>
<b>SURPLUS/(DEFICIT) BEFORE TAXATION</b>		<u>2,058</u>		<u>(1,252)</u>
<b>Tax on Surplus/(deficit)</b>				
Corporation tax charge	376		(158)	
		<u>(376)</u>		<u>158</u>
<b>SURPLUS/(DEFICIT) AFTER TAXATION BEING SURPLUS/(DEFICIT) FOR THE FINANCIAL YEAR</b>		<u><u>1,682</u></u>		<u><u>(1,094)</u></u>



**NARROW GAUGE RAILWAY SOCIETY  
UNAUDITED FINANCIAL STATEMENTS  
FOR THE YEAR ENDED 31 DECEMBER 2020**

Nigel Ricks & Company Ltd

Chartered Accountants

42 Glebe Street  
Loughborough  
Leicestershire  
LE11 1JR



**Narrow Gauge Railway Society  
Unaudited Financial Statements  
For The Year Ended 31 December 2020**

---



**Contents**

	<b>Page</b>
Balance Sheet	1–2
Notes to the Financial Statements	

DRAFT

**Narrow Gauge Railway Society  
Balance Sheet  
As at 31 December 2020**



Registered number: 09925208

		2020		2019	
	Notes	£	£	£	£
<b>FIXED ASSETS</b>					
Intangible Assets	3		250		250
Tangible Assets	4		30,600		30,851
			30,850		31,101
<b>CURRENT ASSETS</b>					
Stocks	5	1,391		1,391	
Debtors	6	5,490		4,862	
Cash at bank and in hand		100,540		105,312	
		107,421		111,565	
<b>Creditors: Amounts Falling Due Within One Year</b>	7	(6,919)		(12,996)	
<b>NET CURRENT ASSETS (LIABILITIES)</b>			100,502		98,569
<b>TOTAL ASSETS LESS CURRENT LIABILITIES</b>			131,352		129,670
<b>NET ASSETS</b>			131,352		129,670
Income and Expenditure Account			131,352		129,670
<b>MEMBERS' FUNDS</b>			131,352		129,670

**Narrow Gauge Railway Society  
Balance Sheet (continued) As  
at 31 December 2020**



For the year ending 31 December 2020 the company was entitled to exemption from audit under section 477 of the Companies Act 2006 relating to small companies.

**Directors' responsibilities:**

- The members have not required the company to obtain an audit in accordance with section 476 of the Companies Act 2006.
- The directors acknowledge their responsibilities for complying with the requirements of the Act with respect to accounting records and the preparation of accounts.
- These accounts have been prepared and delivered in accordance with the provisions applicable to companies subject to the small companies' regime.
- The company has taken advantage of section 444(1) of the Companies Act 2006 and opted not to deliver to the registrar a copy of the company's Income and Expenditure Account.

On behalf of the board

-----

Date

The notes on pages 3 to 6 form part of these financial statements.

**Narrow Gauge Railway Society  
Notes to the Financial Statements  
For The Year Ended 31 December 2020**



**1. Accounting Policies**

**1.1. Basis of Preparation of Financial Statements**

The financial statements are prepared under the historical cost convention and in accordance with the FRS 102 Section 1A Small Entities - The Financial Reporting Standard applicable in the UK and Republic of Ireland and the Companies Act 2006.

**1.2. Turnover**

Turnover is measured at the fair value of the consideration received or receivable, net of discounts and value added taxes. Turnover includes revenue earned from the sale of goods and from the rendering of services. Turnover is reduced for estimated customer returns, rebates and other similar allowances.

**Sale of goods**

Turnover from the sale of goods is recognised when the significant risks and rewards of ownership of the goods has transferred to the buyer. This is usually at the point that the customer has signed for the delivery of the goods.

**Rendering of services**

Turnover from the rendering of services is recognised by reference to the stage of completion of the contract. The stage of completion of a contract is measured by comparing the costs incurred for work performed to date to the total estimated contract costs. Turnover is only recognised to the extent of recoverable expenses when the outcome of a contract cannot be estimated reliably.

**1.3. Intangible Fixed Assets and Amortisation - Other Intangible**

Other intangible assets are .... It is amortised to income and expenditure account over its estimated economic life of ... years.

**1.4. Tangible Fixed Assets and Depreciation**

Tangible fixed assets are measured at cost less accumulated depreciation and any accumulated impairment losses. Depreciation is provided at rates calculated to write off the cost of the fixed assets, less their estimated residual value, over their expected useful lives on the following bases:

Leasehold	25% Straight Line
Fixtures & Fittings	33% Straight Line

**1.5. Stocks and Work in Progress**

Stocks and work in progress are valued at the lower of cost and net realisable value after making due allowance for obsolete and slow-moving stocks. Cost includes all direct costs and an appropriate proportion of fixed and variable overheads. Work-in-progress is reflected in the accounts on a contract by contract basis by recording turnover and related costs as contract activity progresses.

**Narrow Gauge Railway Society**  
**Notes to the Financial Statements (continued)**  
**For The Year Ended 31 December 2020**



**1.6. Taxation**

Income tax expense represents the sum of the tax currently payable and deferred tax.

The tax currently payable is based on taxable profit for the year. Taxable profit differs from profit as reported in the statement of comprehensive income because of items of income or expense that are taxable or deductible in other year and items that are never taxable or deductible. The company's liability for current tax is calculated using tax rates that have been enacted or substantively enacted by the end of the reporting period.

Deferred tax is recognised on timing differences between the carrying amounts of assets and liabilities in the financial statements and the corresponding tax bases used in the computation of taxable profit. Deferred tax liabilities are generally recognised for all taxable timing differences. Deferred tax assets are generally recognised for all deductible temporary differences to the extent that it is probable that taxable profits will be available against which those deductible timing differences can be utilised. The carrying amount of deferred tax assets is reviewed at the end of each reporting period and reduced to the extent that it is no longer probable that sufficient taxable profits will be available to allow all or part of the asset to be recovered.

Deferred tax assets and liabilities are measured at the tax rates that are expected to apply in the period in which the liability is settled or the asset realised, based on tax rates (and tax laws) that have been enacted or substantively enacted by the end of the reporting period. Deferred tax liabilities are presented within provisions for liabilities and deferred tax assets within debtors. The measurement of deferred tax liabilities and asset reflects the tax consequences that would follow from the manner in which the Company expects, at the end of the reporting period, to recover or settle the carrying amount of its assets and liabilities.

Current or deferred tax for the year is recognised in profit or loss, except when they related to items that are recognised in other comprehensive income or directly in equity, in which case, the current and deferred tax is also recognised in other comprehensive income or directly in equity respectively.

**2. Average Number of Employees**

Average number of employees, including directors, during the year was as follows:

	<b>2020</b>	<b>2019</b>
Office and administration	10	10
	10	10

**3. Intangible Assets**

	<b>Other £</b>
<b>Cost</b>	
As at 1 January 2020	250
As at 31 December 2020	250
<b>Net Book Value</b>	
As at 31 December 2020	250
As at 1 January 2020	250

**Narrow Gauge Railway Society**  
**Notes to the Financial Statements (continued)**  
**For The Year Ended 31 December 2020**



**4. Tangible Assets**

	<b>Land &amp; Property</b>			
	<b>Freehold</b>	<b>Leasehold</b>	<b>Fixtures &amp; Fittings</b>	<b>Total</b>
	<b>£</b>	<b>£</b>	<b>£</b>	<b>£</b>
<b>Cost</b>				
As at 1 January 2020	30,302	617	1,440	32,359
As at 31 December 2020	30,302	617	1,440	32,359
<b>Depreciation</b>				
As at 1 January 2020	-	578	930	1,508
Provided during the period	-	39	212	251
As at 31 December 2020	-	617	1,142	1,759
<b>Net Book Value</b>				
As at 31 December 2020	30,302	-	298	30,600
As at 1 January 2020	30,302	39	510	30,851

**5. Stocks**

	<b>2020</b>	<b>2019</b>
	<b>£</b>	<b>£</b>
Stock - materials and work in progress	1,391	1,391
	1,391	1,391

**6. Debtors**

	<b>2020</b>	<b>2019</b>
	<b>£</b>	<b>£</b>
<b>Due within one year</b>		
Trade debtors	-	223
Prepayments and accrued income	1,339	330
Corporation tax recoverable assets	-	158
	1,339	711
<b>Due after more than one year</b>		
Other debtors	4,151	4,151
	4,151	4,151
	5,490	4,862

**Narrow Gauge Railway Society**  
**Notes to the Financial Statements (continued)**  
**For The Year Ended 31 December 2020**



**7. Creditors: Amounts Falling Due Within One Year**

	<b>2020</b>	<b>2019</b>
	<b>£</b>	<b>£</b>
Trade creditors	1,506	180
Corporation tax	218	-
Subs received in advance	-	12,416
Accruals and deferred income	5,195	400
	<u>6,919</u>	<u>12,996</u>

**8. General Information**

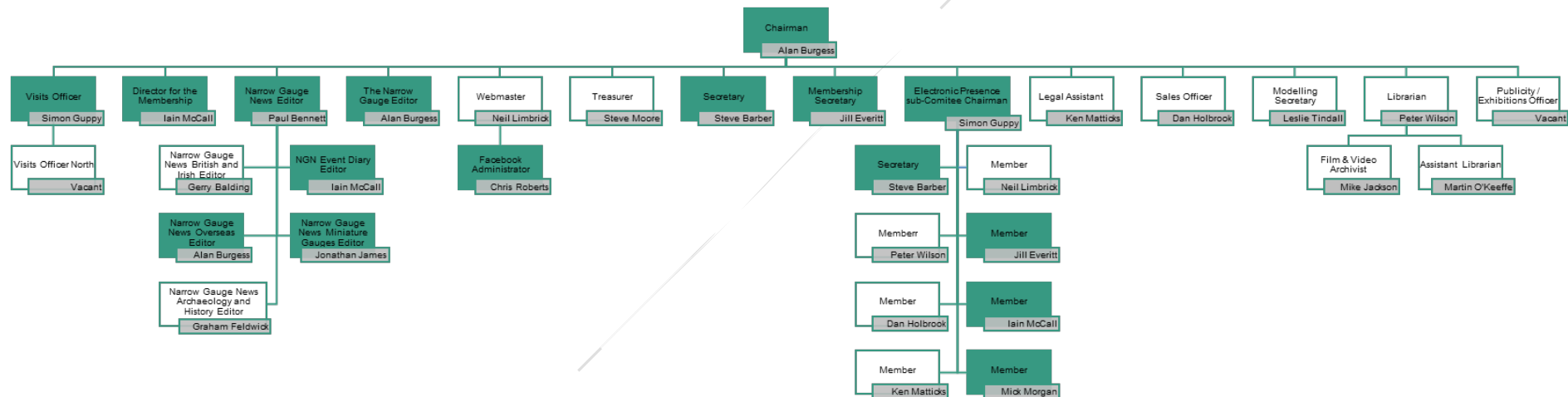
Narrow Gauge Railway Society is a private company, limited by shares, incorporated in England & Wales, registered number 09925208. The registered office is 246 Hillbury Road, Warlingham, Surrey, CR6 9TP.



## Appendix B Directors, Committee Members & Vacancies 2021



# Narrow Gauge Railway Society Directors and Company Officers (08/05/2021)



Solid Shading indicates NGRS Company Director



# NGRS DIRECTOR and COMPANY OFFICER CONTACT LIST – 08/05/2021



Chairman	Alan Burgess	Director	6 The Crescent, Orton Longueville, Peterborough. PE2 7DT	<a href="mailto:alanburgess390@outlook.com">alanburgess390@outlook.com</a>
Secretary	Steve Barber	Director	"Hillbury Cottage", 246 Hillbury Road, Warmingham, Surrey. CR6 9TP	<a href="mailto:secretary@ngrs.org">secretary@ngrs.org</a>
Treasurer	Steve Moore		10 Badger Close, Guildford, Surrey GU2 9PJ	<a href="mailto:treasurer@ngrs.org">treasurer@ngrs.org</a>
Membership Secretary	Jill Everitt	Director	4 Barnside Way, Moulton, Cheshire, CW9 8PT	<a href="mailto:membership@ngrs.org">membership@ngrs.org</a>
Librarian	Peter Wilson		Homestead, Ramsgate Street, Edgefield, Melton Constable, Norfolk, NR24 2AY	<a href="mailto:library@ngrs.org">library@ngrs.org</a>
Assistant Librarian	Martin O'Keeffe		10 Meadowcroft, Whitchurch, Shropshire SY13 1BD	<a href="mailto:hecla777@hotmail.com">hecla777@hotmail.com</a>
Film & Video Archivist	Mike Jackson		6 Coastguard Cottages, Upper Road, Dover. CT16 1HS	<a href="mailto:mikejackson6@btinternet.com">mikejackson6@btinternet.com</a>
TNG Editor	Alan Burgess	Director	6 The Crescent, Orton Longueville, Peterborough. PE2 7DT	<a href="mailto:alanburgess390@outlook.com">alanburgess390@outlook.com</a>
NGN Editor	Paul Bennett	Director	90 Stortford Hall Park, Bishop's Stortford CM23 5AN	<a href="mailto:publications@ngrs.org">publications@ngrs.org</a>
NGN British and Irish Editor	Gerry Balding		75 Vane Close, Thorpe St Andrew, Norwich, Norfolk NR7 0US	<a href="mailto:gerry.balding@btinternet.com">gerry.balding@btinternet.com</a>
NGN Miniature Gauges Editor	Jonathan James	Director	31, Beacon Road, Chatham, Kent. ME5 7BW	<a href="mailto:min.rail.editor@ngrs.org">min.rail.editor@ngrs.org</a>
NGN Archaeology and History Editor	Graham Feldwick		22A Ropers Lane, Wareham, Dorset BH20 4QT	<a href="mailto:feldwick@globalnet.co.uk">feldwick@globalnet.co.uk</a>
NGN Overseas Editor	Alan Burgess	Director	6 The Crescent, Orton Longueville, Peterborough. PE2 7DT	<a href="mailto:alanburgess390@outlook.com">alanburgess390@outlook.com</a>
NGN Event Diary Editor	Iain McCall	Director	3 Broadleaze, Upper Seagry, Chippenham, Wiltshire SN15 5EY	<a href="mailto:iain@mainlineandmaritime.co.uk">iain@mainlineandmaritime.co.uk</a>
Sales Officer	Dan Holbrook		8 Woodside, Sunderland, Tyne and Wear SR2 7ET	<a href="mailto:sales@ngrs.org">sales@ngrs.org</a>
Webmaster	Neil Limbrick		14 Connaught Avenue, Kidderminster, Worcestershire DY11 6LS	<a href="mailto:webmaster@ngrs.org">webmaster@ngrs.org</a>
Facebook Administrator	Chris Roberts	Director	296 Torrisholme Road, Lancaster, LA1 2TU	<a href="mailto:chrisxroberts7@gmail.com">chrisxroberts7@gmail.com</a>
Visits Officer	Simon Guppy	Director	16 Mascot Road, Windmill Hill, Bristol BS3 4PP	<a href="mailto:simon@jomat-management-services.co.uk">simon@jomat-management-services.co.uk</a>
Visits Officer North	Vacant			
Legal Assistant	Ken Matticks		3413 Fountain Way, Granbury Texas USA 76049	<a href="mailto:matticks@airmail.net">matticks@airmail.net</a>
Modelling Secretary	Leslie Tindall		47 Cliff Court, Currie Road, Sandown, Isle of Wight, PO36 8NU	<a href="mailto:leslie.w.tindall@gmail.com">leslie.w.tindall@gmail.com</a>
Publicity / Exhibitions Officer	Vacant			
Director for the Membership	Iain McCall	Director	3 Broadleaze, Upper Seagry, Chippenham, Wiltshire SN15 5EY	<a href="mailto:iain@mainlineandmaritime.co.uk">iain@mainlineandmaritime.co.uk</a>

# Society Officer Vacancies

The NGRS has a number of vacancies for people willing to help with the running and development of the Society. The duties are not greatly time-consuming, and enthusiasm is more important than experience – help will always be available as you get to grips with the detail. Attending two committee meetings a year, one on the day of the AGM in May and the other in October is expected.

If you can help, we would be delighted – please get in touch with the Secretary, Steve Barber (246 Hillbury Road, Warlingham, Surrey, CR6 9TP) or send an email to: [secretary@ngrs.org](mailto:secretary@ngrs.org). If you have any queries or require further information, please contact the Secretary

## Visit Officer North

Members' visits to lines otherwise difficult-to-access have become very popular and we would like to have on board a volunteer to develop this activity in the northern half of the UK. Duties would involve identifying potential lines, negotiating access, and organising the visits themselves.

## Publicity / Exhibitions Officer

We would like to recruit a Publicity Officer to progress the Society's image and presence. Ideally you would be involved in running and manning our stand at the Statfold open days, and this might be extended to other appropriate venues. Beyond that, we have no fixed ideas as to how the task might be approached, although the use of social media and PR would be beneficial. Some liaison with the general railway press will also be required, as will an ability to write persuasively.

The Society would be happy to have many members acting as Publicity Assistants, undertaking this role on a local level or with an individual Railway

## General

The Directors are always pleased to be offered assistance with administering the Society. It should be noted that several of the Directors and Society Officers are fulfilling more than one role and it would be prudent to reduce their commitments.

Assistance in organising visits and AGMs etc. is also gratefully accepted and is usually required on a geographic basis.

If you believe you are able to help in any of the forgoing areas or you are prepared to give general assistance including assisting in cataloguing our library (books, images, moving images/ other) please do not hesitate to contact the Secretary or other Director or Society Officer for further information